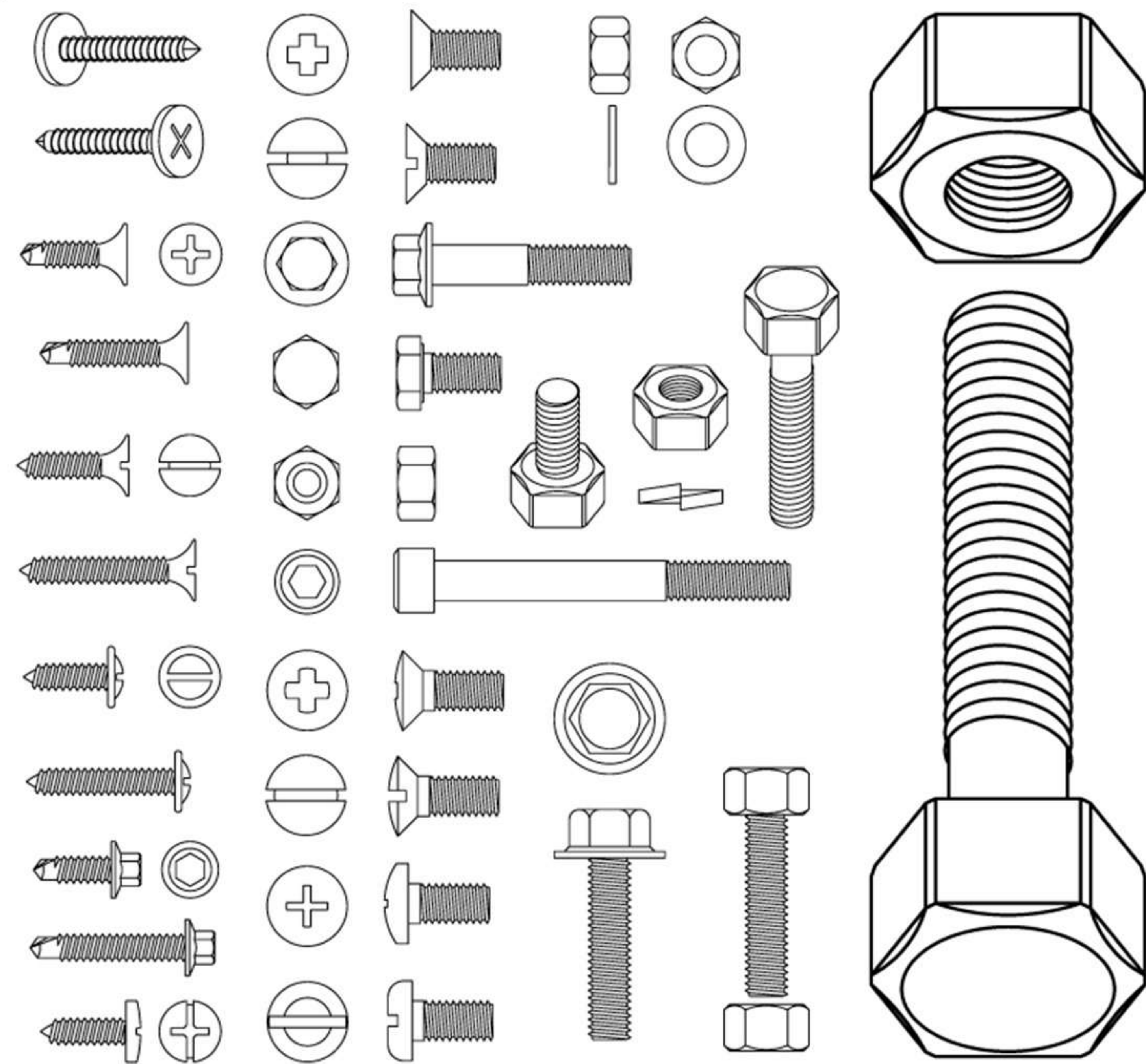




[www.rixonfasteners.com](http://www.rixonfasteners.com)



# RIXON FASTENERS

ONE STOP SOLUTION FOR ALL YOUR FASTENERS NEED

#Rixon Fasteners

**RIXON**<sup>TM</sup>  
FASTENERS PVT.LTD.



## OUR MISSION

We at Rixon Fasteners, are committed to deliver products that meet and exceed client's requirements and expectations.

## OUR VISSION

We aim to be the Market Leader.



## OUR MISSION

The Management of Rixon Fasteners. Pvt. Ltd. is committed to deliver Highest Quality Product and Services in achieving Total Customer Satisfaction.



# ABOUT US

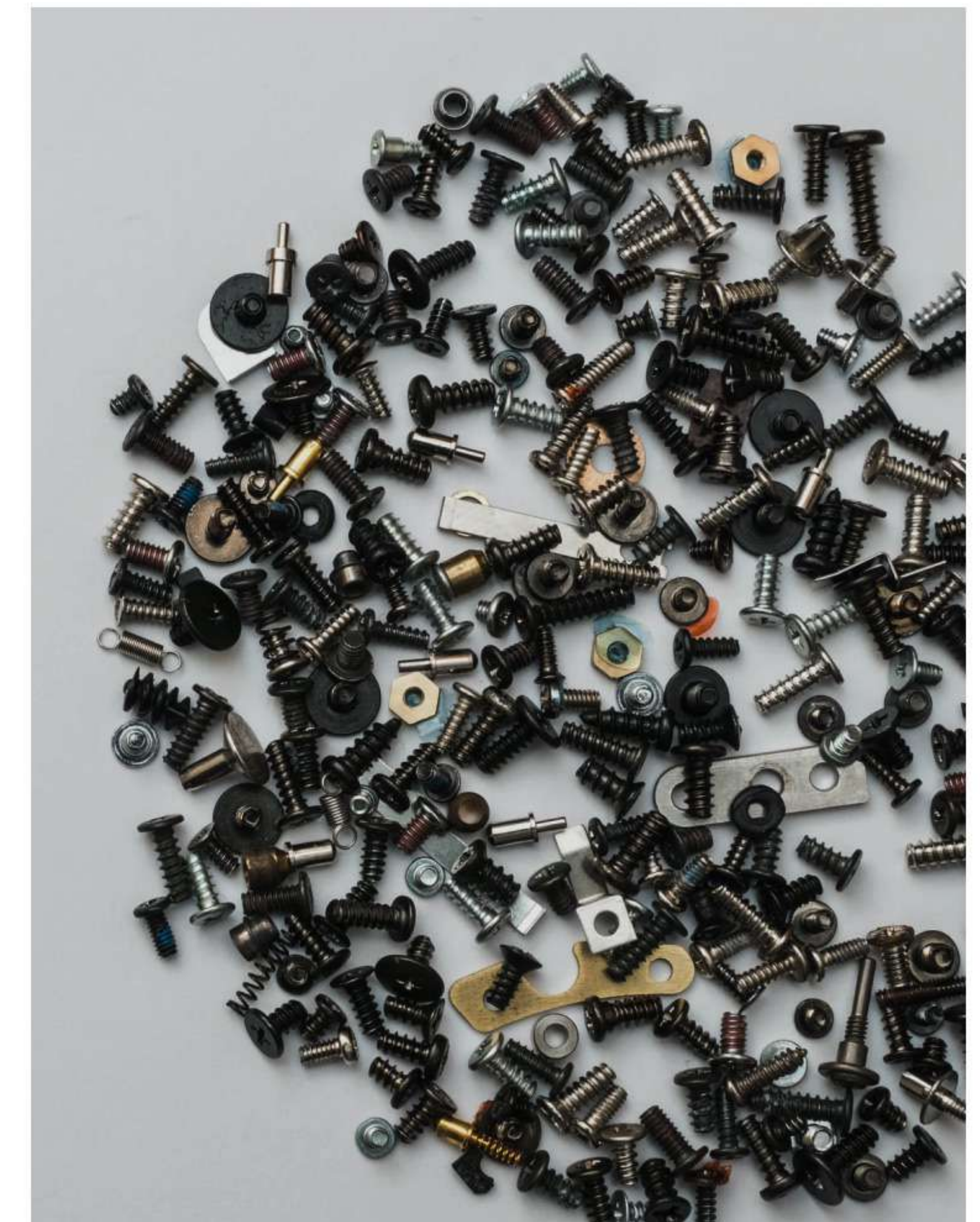
Our company code is one of measured strategic management, a desire to fulfil client's needs, a nexus of skilled workmanship and an infallible commitment to product quality control.

Our company is a ferrous & non-ferrous fastener manufacturing & supply company. We have been engaged in manufacture and supply of precision fasteners of all types. Our clientele include almost all reputed OEM's and Business houses in various fields.

We supply quality industrial fasteners and related products for practically every engineering need.

All our fasteners confirm to the highest international standards - we have comprehensive quality checks stringent quality control tests are conducted at every stage throughout the manufacturing process which helps us maintain the high quality standard we have set ourselves.

Performance matters; marketing the right product, in the right quality, within the right time frame, in the right price, using the right raw materials and conducting and going about our business in the right manner is what we are all about.





# VENDOR MANAGEMENT INVENTORY

Through the introduction of a managed system we can significantly reduce the time of expense spent controlling your fastener parts usage-extensively reducing your Total Acquisition Costs.

## VMI Benefits

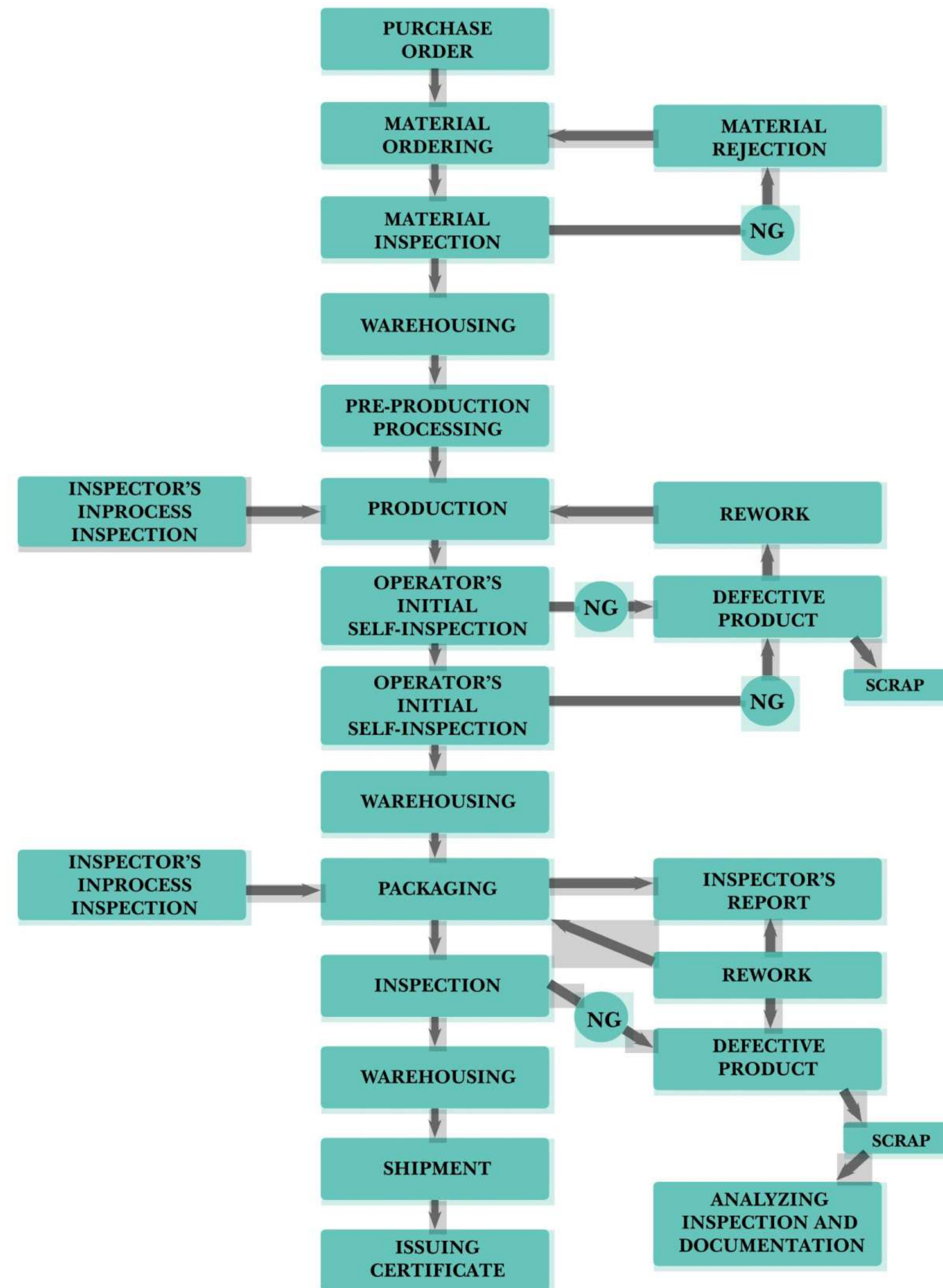
The benefit of VMI System are extensive it essentially reduces the amount of non-value added time spent on getting the right destination at the right time.

- Vendor based consolidated & reduction.
- Decreased inventory & Stock holding costs.
- Release administration costs.
- Condensed administration costs.
- Elimination of stock outs.
- Minimized storage space.





# FLOW CHART





# INDUSTRIES WE SERVE



REFINERIES &  
PETROCHEMICALS



CHEMICAL &  
FERTILIZERS



OIL & GAS



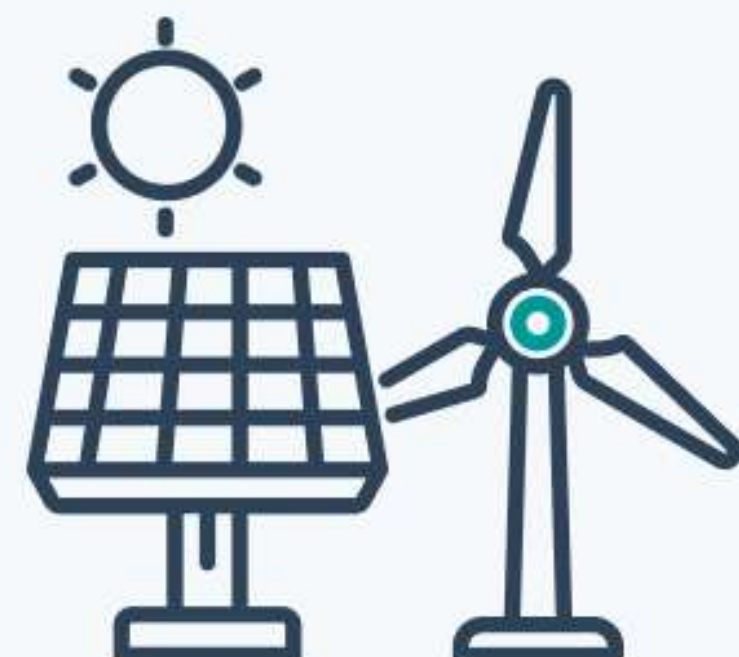
ENGINEERING



NUCLEAR &  
THERMAL



NETWORKING  
SERVER



SOLAR



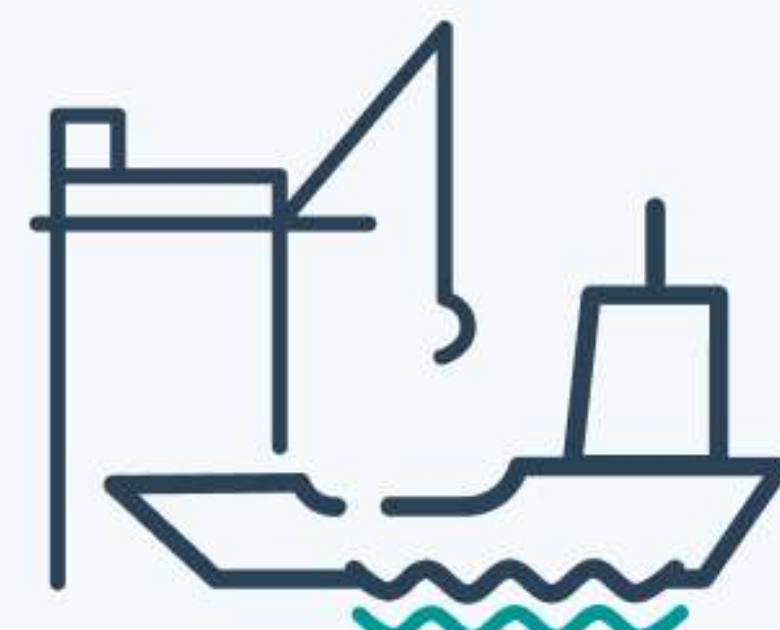
METRO



RAILWAYS



INFRASTRUCTURE



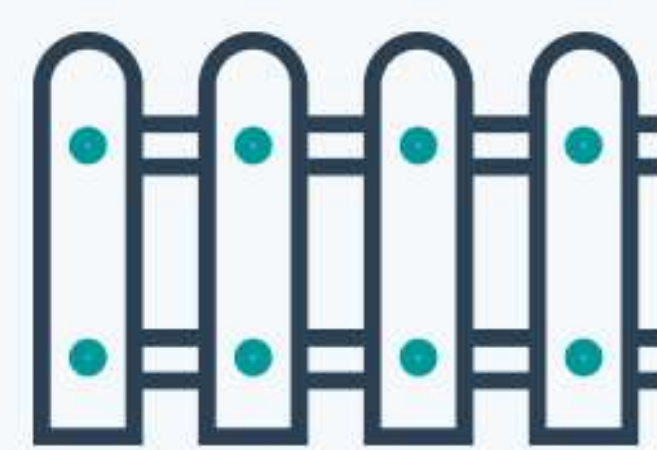
SHIP BUILDING



AUTOMOBILES



CONSTRUCTION



FENCING



ROOFING



BUS



FURNITURE



AEROSPACE



ELECTRONICS

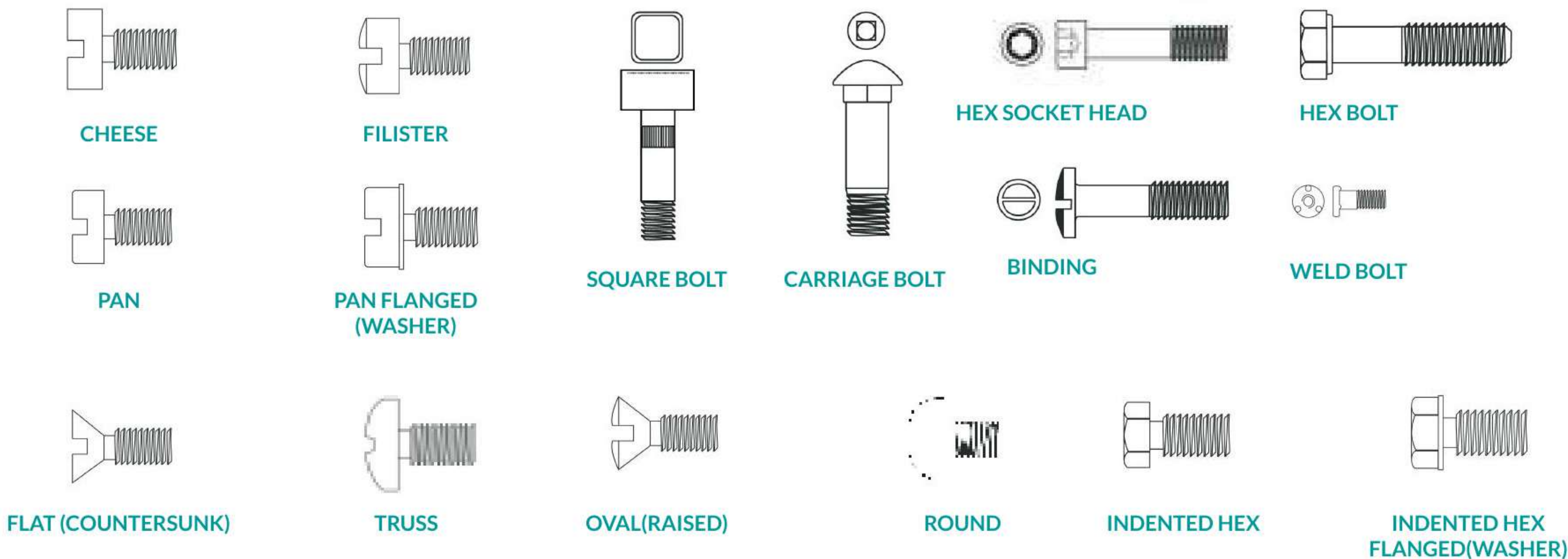


DEFENCE

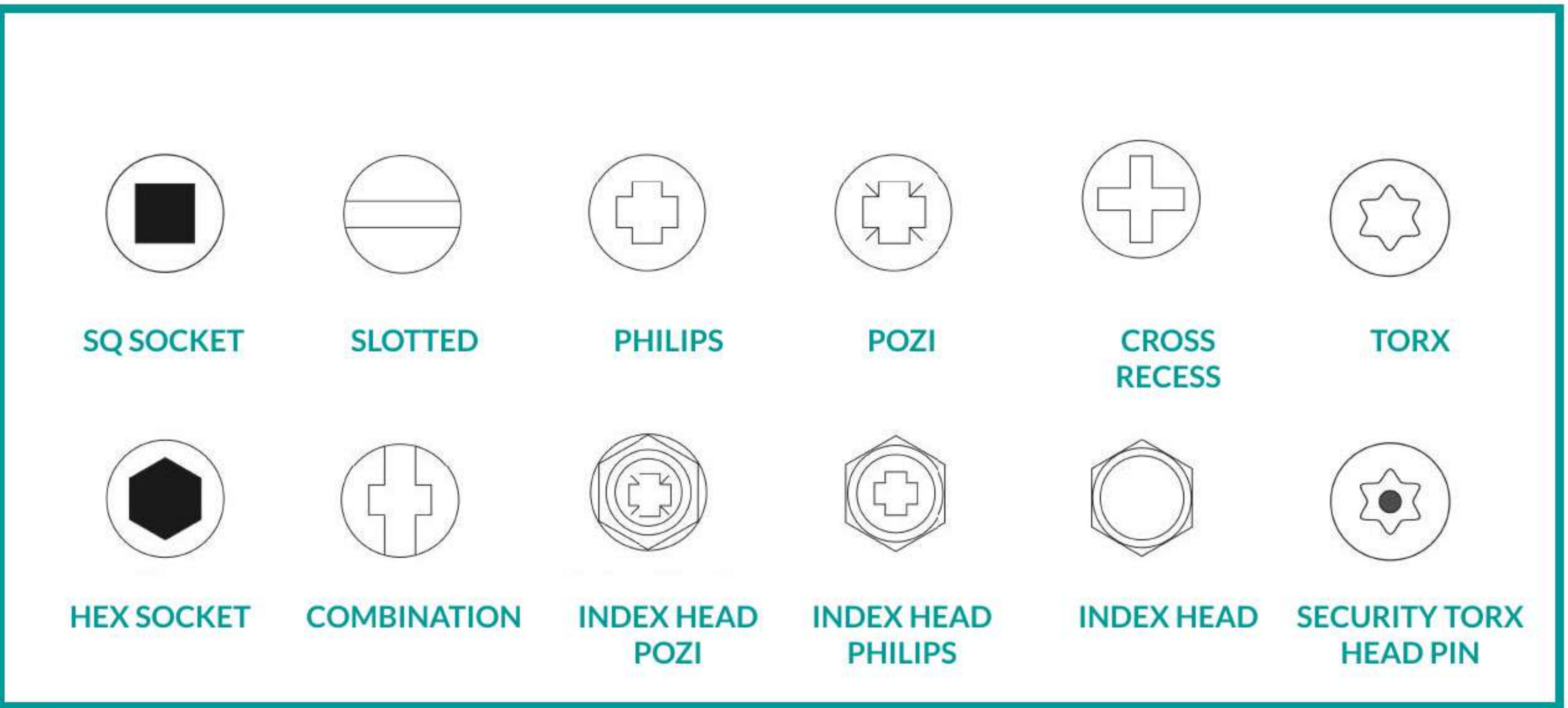


# TYPES

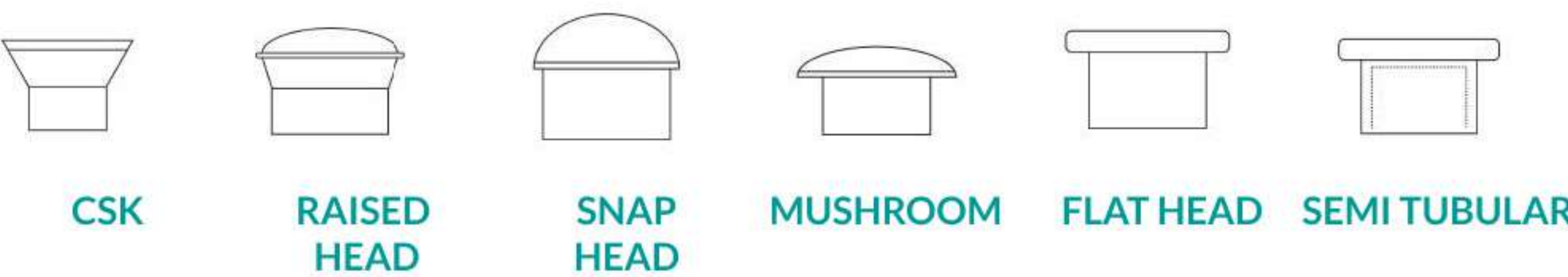
## HEAD STYLES



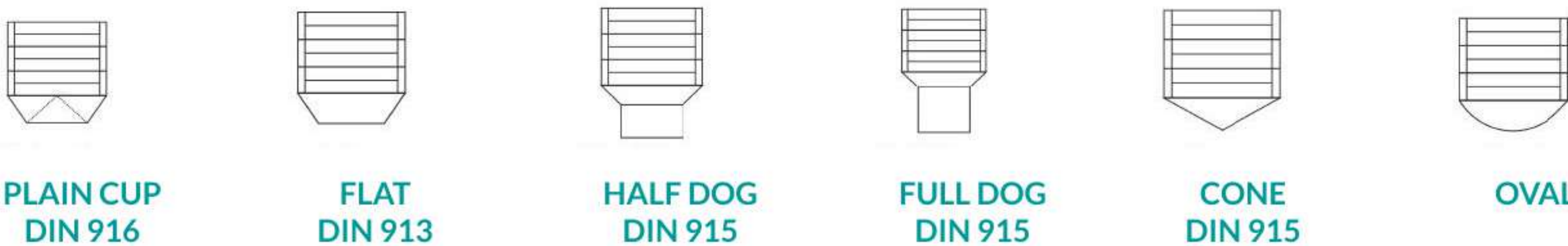
## DRIVE STYLES



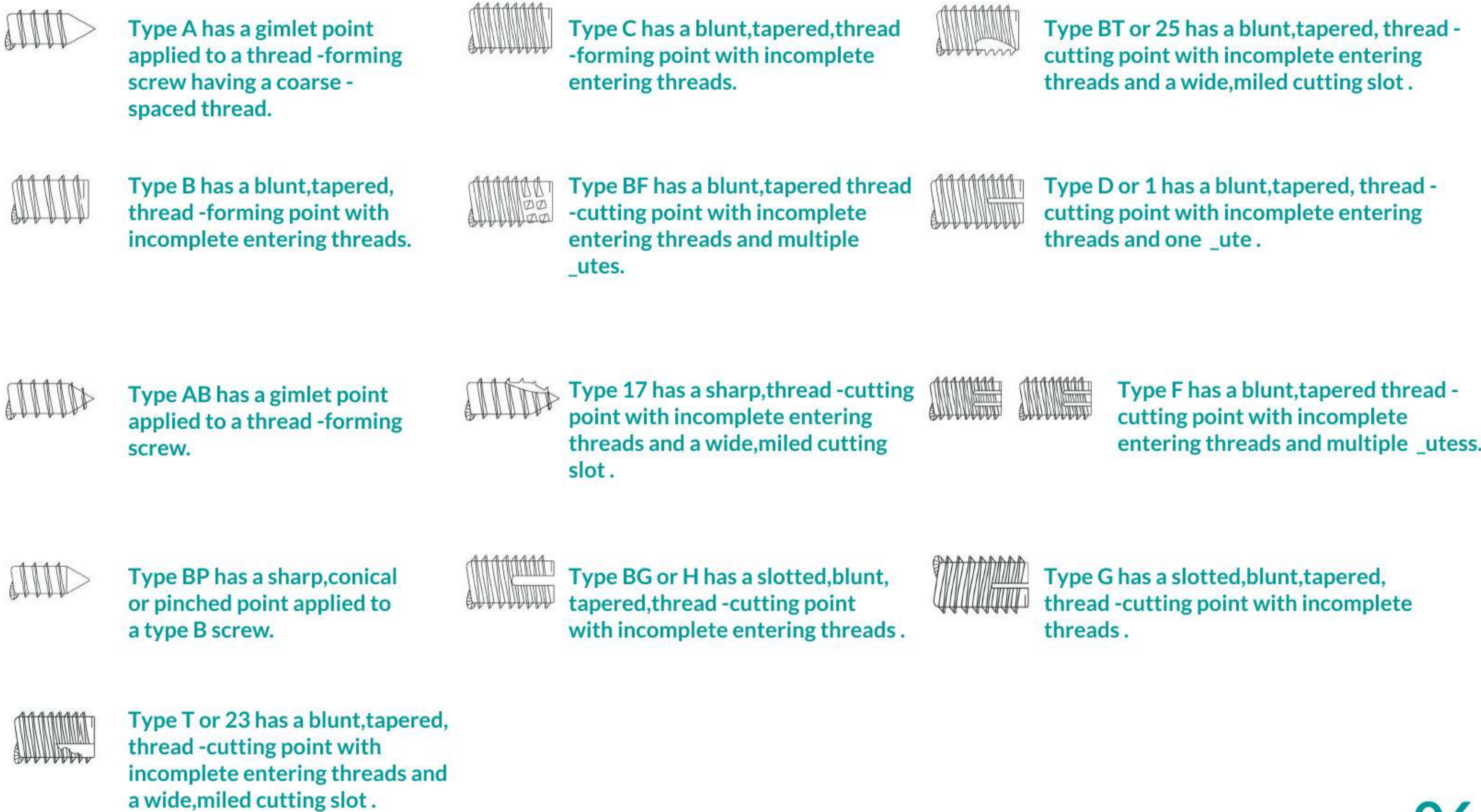
## Rivets



## GRUB SCREWS



## TAPPING SCREWS





# CATEGORIES

**01 NUTS**

**02 BOLTS**

**03 WASHERS**

**04 PLUGS**

**05 STUDS**

**06 SCREWS**

**07 SELF TAPPING SCREWS**

**08 SELF DRILLING SCREWS**

**09 GRUB SCREWS /SET SCREWS**

**10 ANCHORS**

**11 RIVETS**

**12 ADJUSTING RINGS**

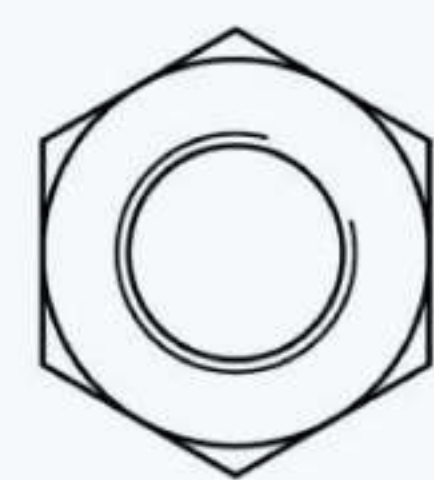
**13 PINS**

**14 EYE BOLTS**



# NUTS

## PINE NUTS



**DIN : 431**

**SIZE : M6 to M42**

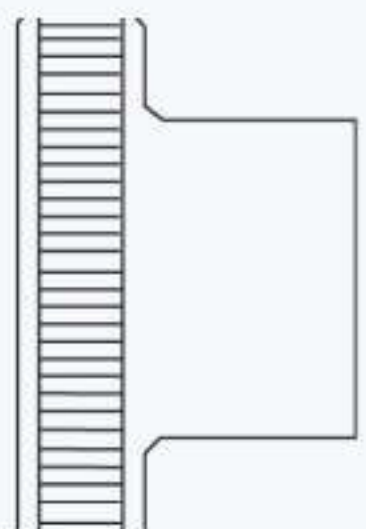
## HEXAGON THIN NUTS



**DIN : 439 /936**

**SIZE : M6 to M42**

## KNURLED THUMB NUTS

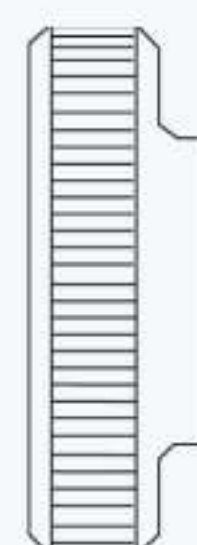


**DIN : 466**

**SIZE : M3/M10**

**TYPE : High**

## KNURLED THUMB NUTS

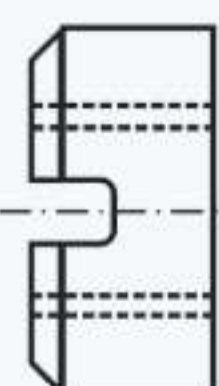
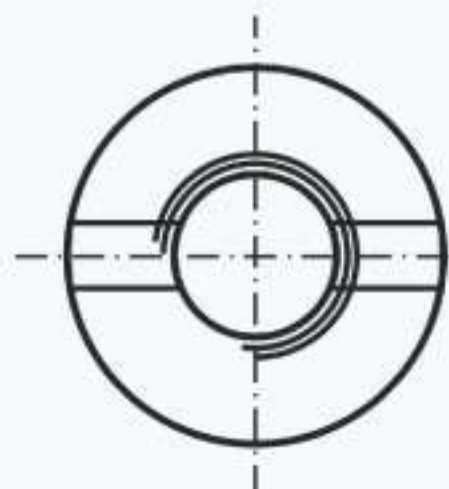


**DIN : 467**

**SIZE : M3/M10**

**TYPE : Thin**

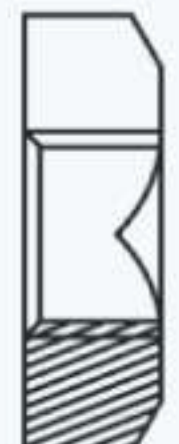
## SLOTTED ROUND NUTS



**DIN : 546**

**SIZE : M6/M16**

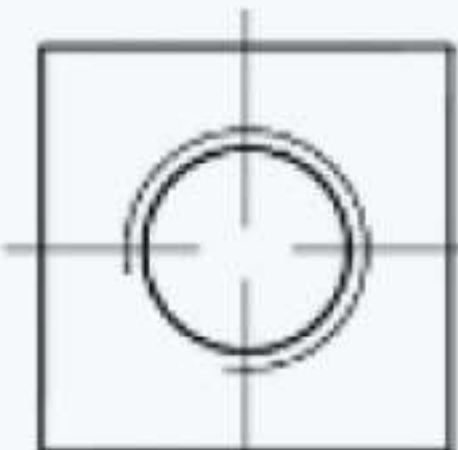
## SQUARE NUTS



**DIN : 557**

**SIZE : M6/M12**

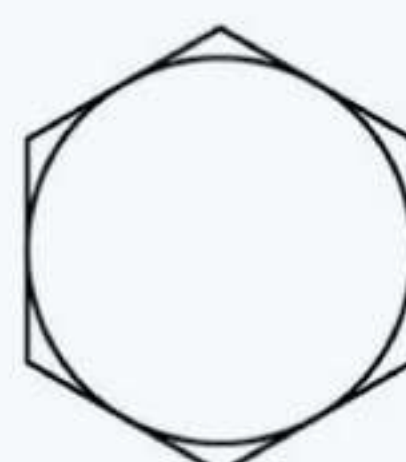
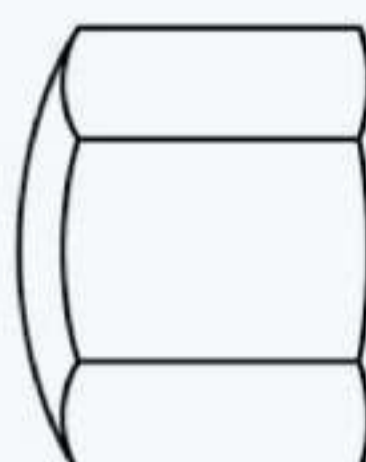
## SQUARE THIN NUTS



**DIN : 562**

**SIZE : M6/M12**

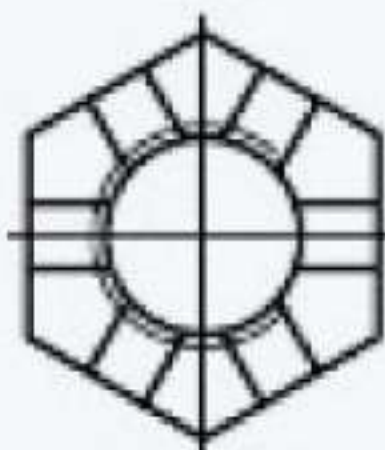
## HEXAGON CAP NUTS



**DIN : 917**

**SIZE : M6 to M12**

## THIN HEXAGON CASTLE NUTS,SLOTTED

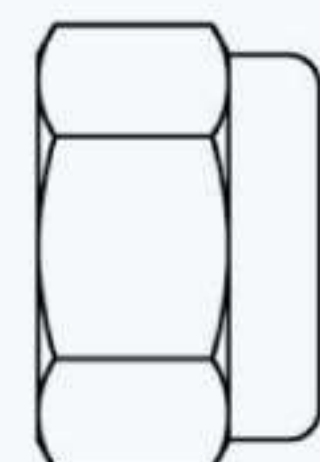
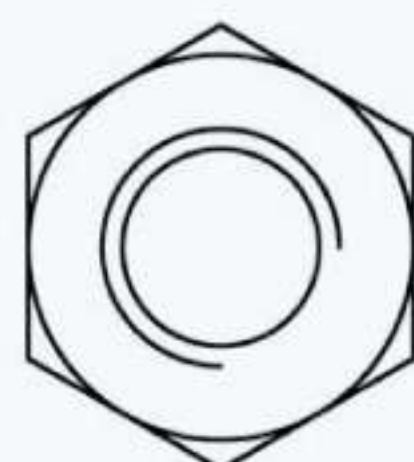


**DIN : 979/935/937**

**SIZE : M5/M36**

**TYPE : High,Low**

## PREVAILING TORQUE TYPE HEXAGON NUTS

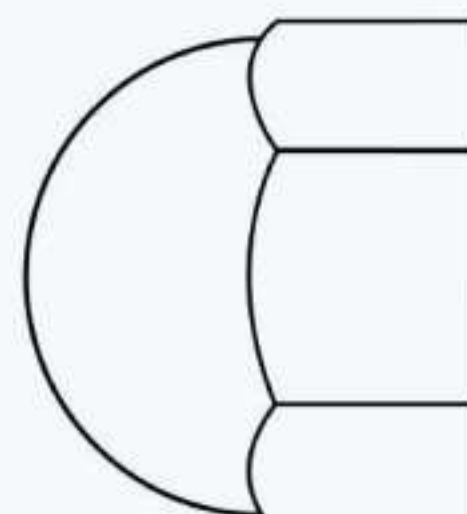
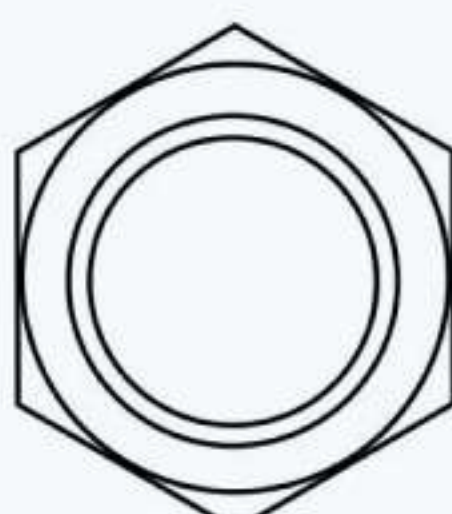


**DIN : 982,985**

**SIZE : M3/M12**

**TYPE : High,Low**

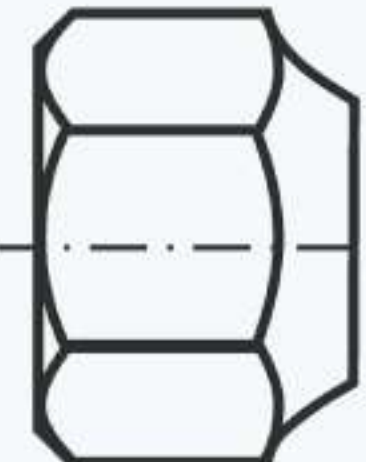
## HEXAGON DOMED CAP NUTS



**DIN : 1587**

**SIZE : M6/M12**

## HEXAGON NUTS 1,5D



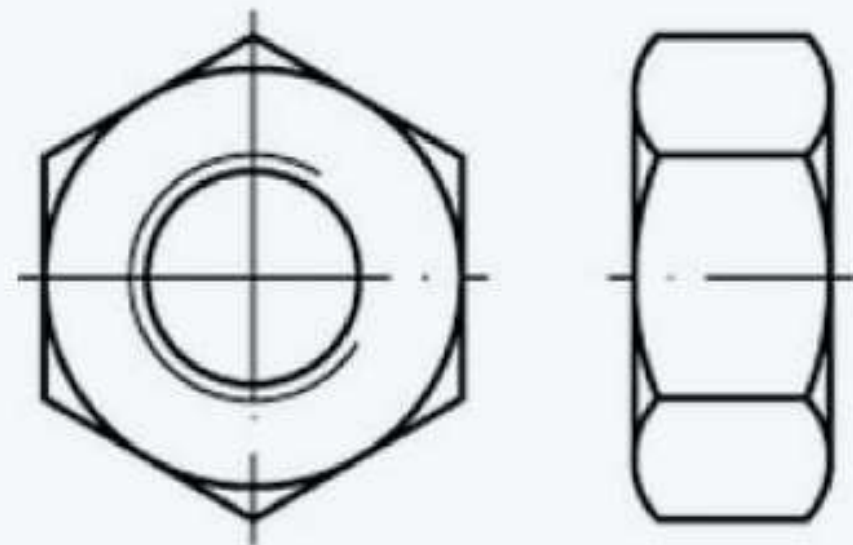
**DIN : 6330**

**SIZE : M6/M36**



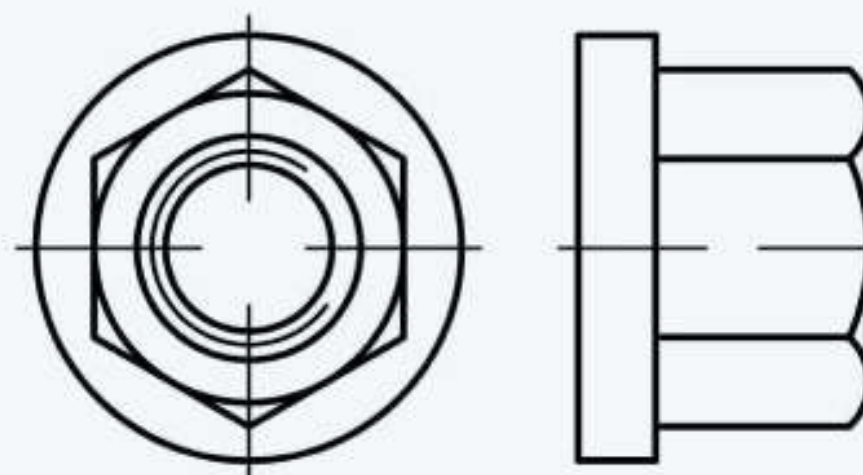
# NUTS

## HEXAGON NUTS



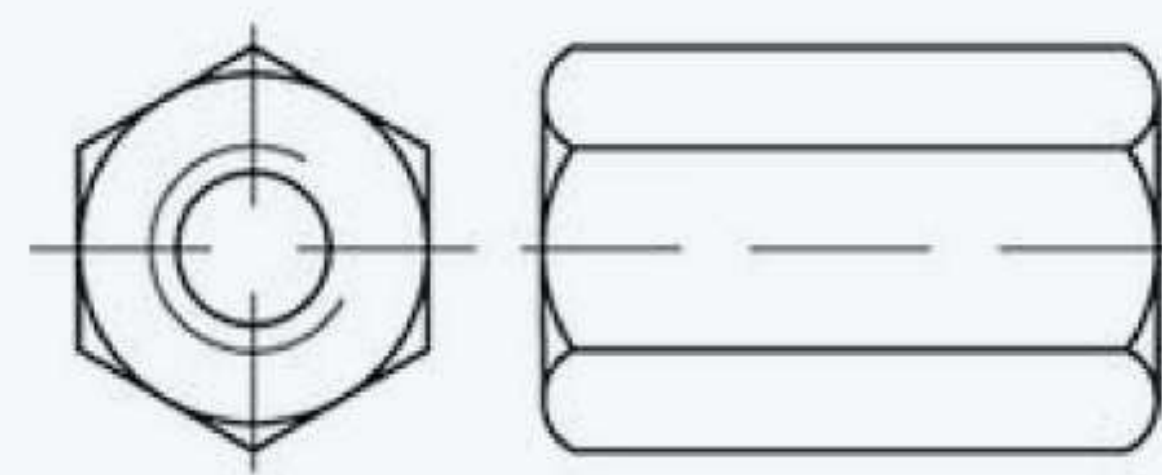
**DIN : 934**  
**SIZE : M3 to M42**

## HEXAGON NUTS 1,5D WITH COLLAR



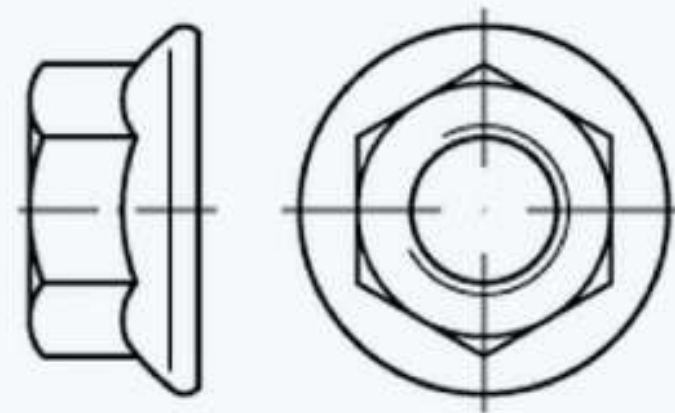
**DIN : 6331**  
**SIZE : M6/M36**

## HEXAGON NUTS, M=3D



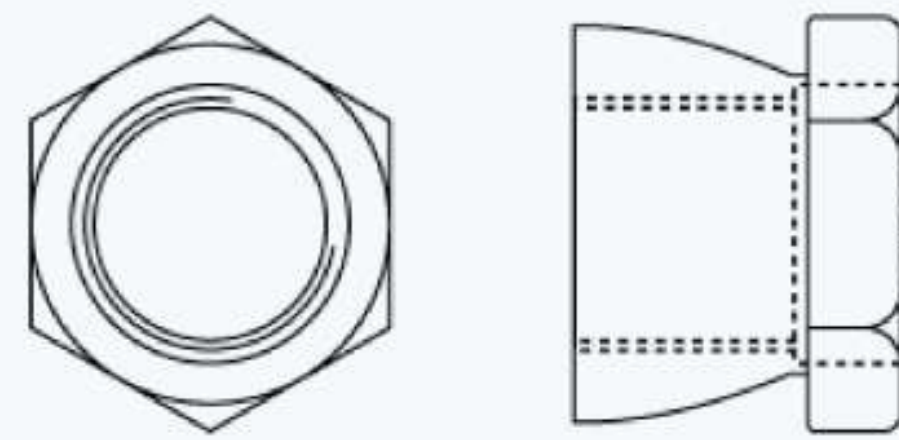
**DIN : 6334**  
**SIZE : M6/M36**

## HEXAGON FLANGE NUTS



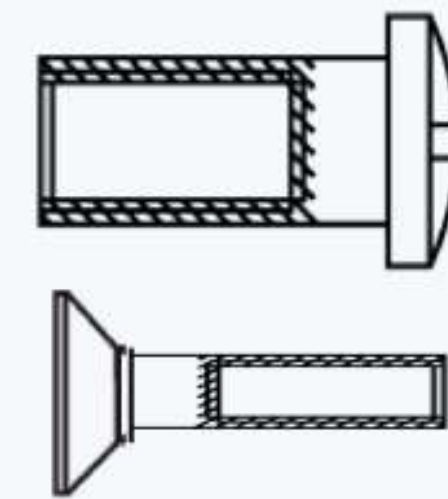
**DIN : 6923**  
**SIZE : M3/M42**

## SHEAR NUTS



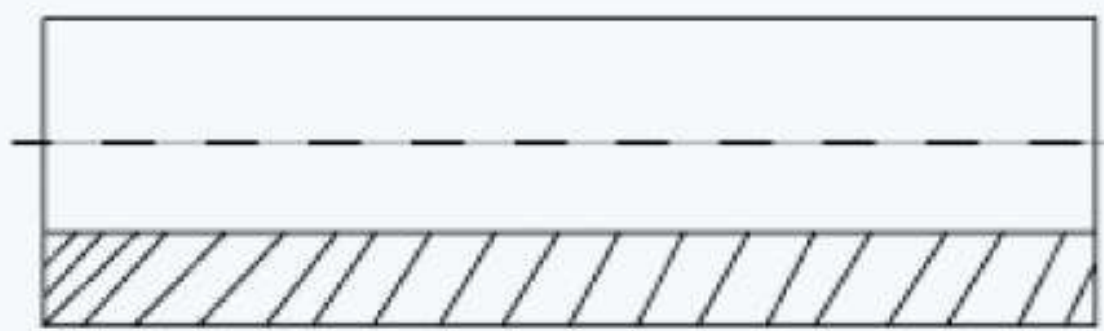
**ATN : RF 01**  
**SIZE : M4/M36**

## SLOTTED SLEEVE NUT HEXAGON SOCKET COUNTERSUNK HEAD SLEEVE NUT



**ATN : RF 12**  
**SIZE : M4/M16**

## ROUND COUPLING NUTS

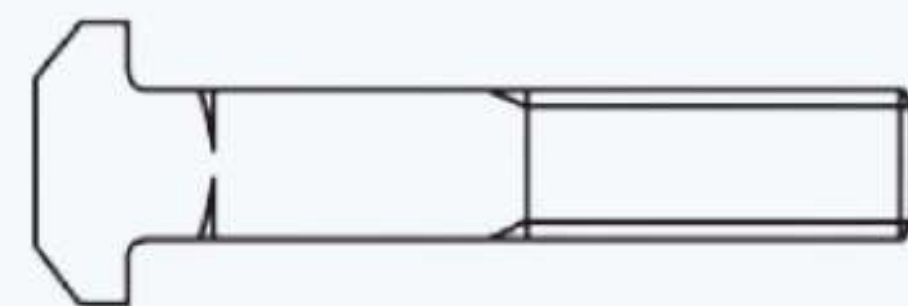


**ATN : RF 39**  
**SIZE : M4/M16**



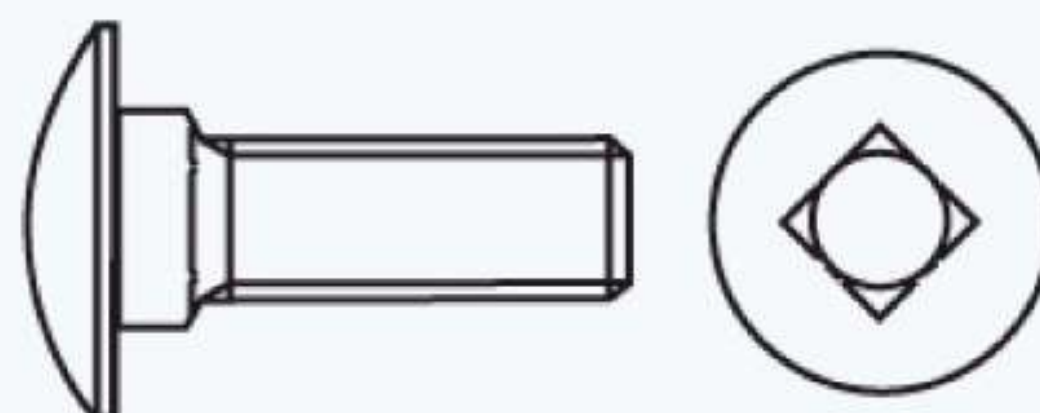
# BOLTS

## T-HEAD BOLTS WITH SQUARE NECK HEAD



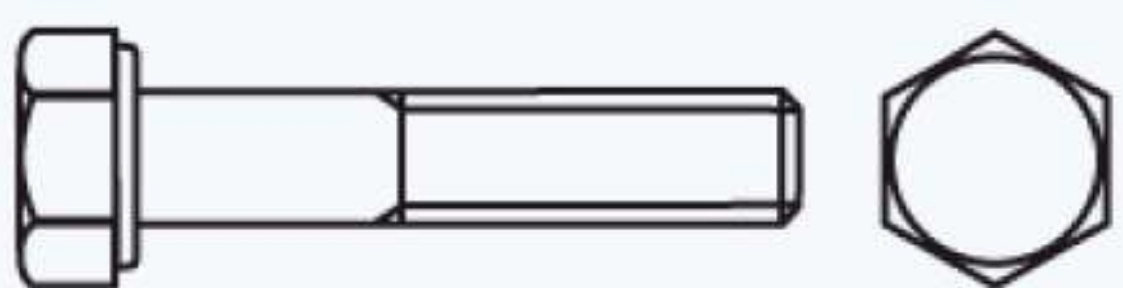
**DIN : 186**  
**SIZE : M8 to M36**

## MUSHROOM HEAD SQUARE NECK BOLTS



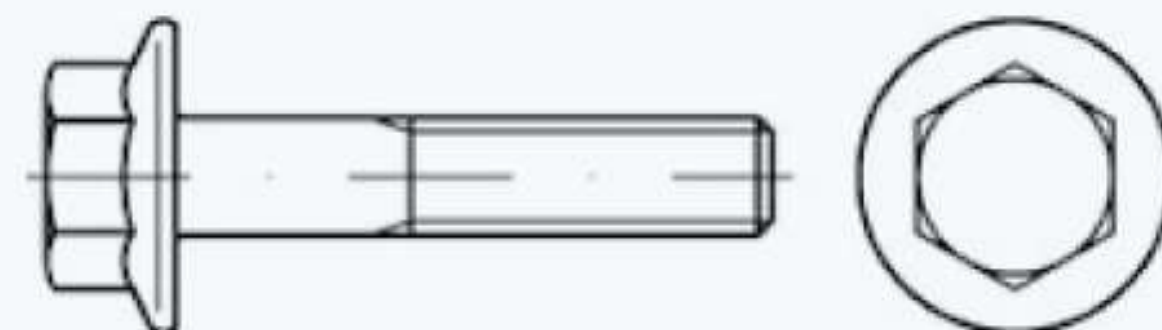
**DIN : 603**  
**SIZE : M5 to M20**

## HEXAGON HEAD BOLTS & SCREW



**DIN : 931, 933**  
**SIZE : M3 to M42**

## HEXAGON FLANGE BOLTS METRIC



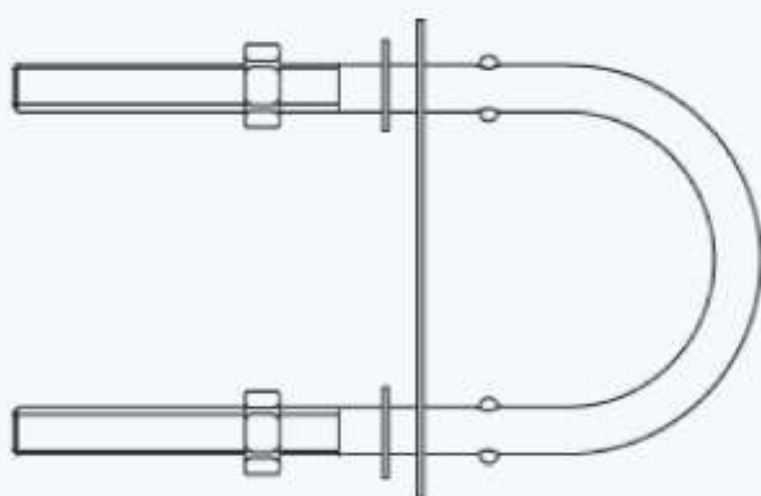
**DIN : 6921**  
**SIZE : M3 / M42**

## SHEAR BOLTS



**ATN : RF 02**  
**SIZE : M4/M12**

## U BOLT



**ATN : RF 23**  
**SIZE : M6/M20**



# WASHERS

## PLAIN WASHER



## SPRING FORM WASHER



## CUP WASHER



## CONICAL WASHER/SPHERICAL WASHERS



# PLUGS

## HEXAGON SOCKET PIPE PLUGS, CONICAL THREAD



## HEXAGON SOCKET PIPE PLUGS, CYLINDRICAL THREADS



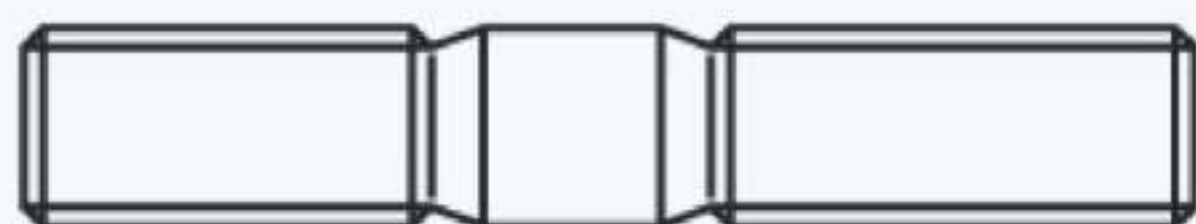
## HEXAGON HEAD PIPE PLUGS, CYLINDRICAL THREADS





# STUDS

## STUDS,METAL END~2D



DIN : 835  
SIZE : M6 to M36

## STUDS,METAL END~1D,5D



DIN : 938,939  
SIZE : M6 to M36

## THREADED RODS



DIN : 975,976  
SIZE : M6 to M36  
3 Meter Long

# SCREWS

## SLOTTED CHEESE HEAD SCREWS



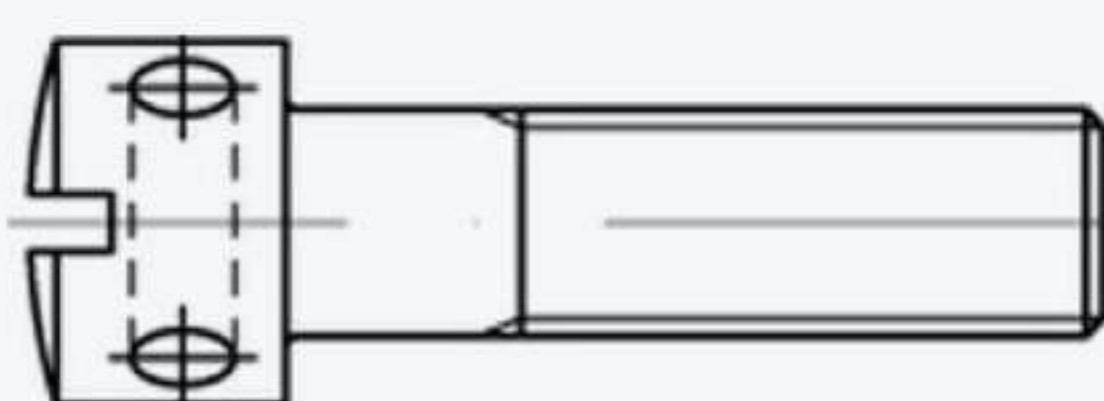
DIN : 84  
SIZE : M2 to M12

## SLOTTED PAN HEAD SCREWS



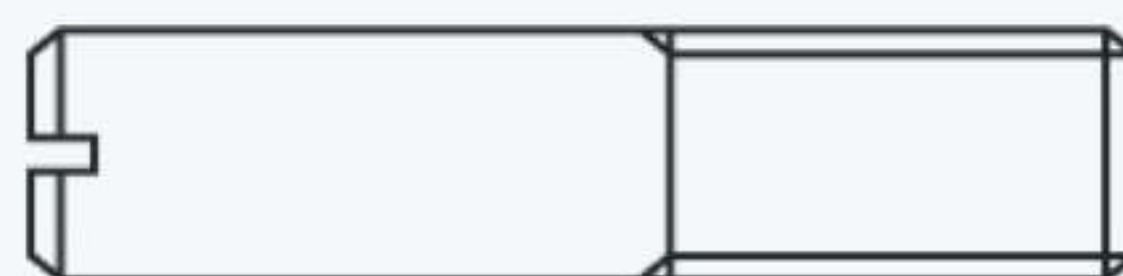
DIN : 85  
SIZE : M2 to M12

## SLOTTED CAPSTAN SCREWS



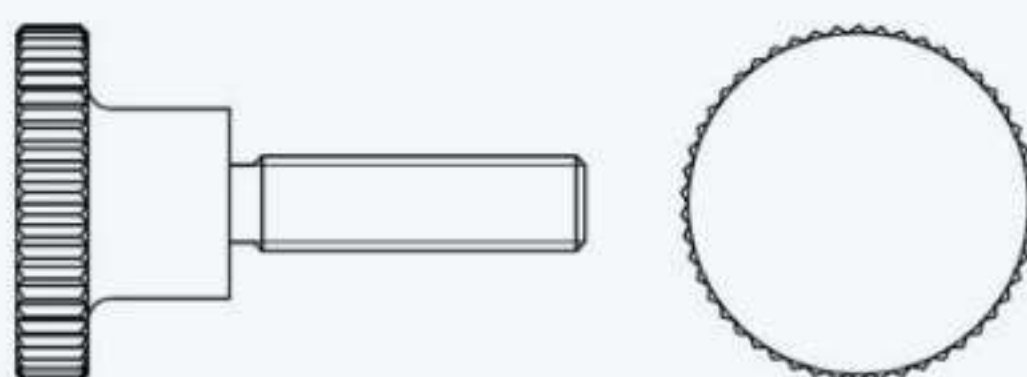
DIN : 404  
SIZE : M3 to M8

## SLOTTED HEADLESS SCREWS



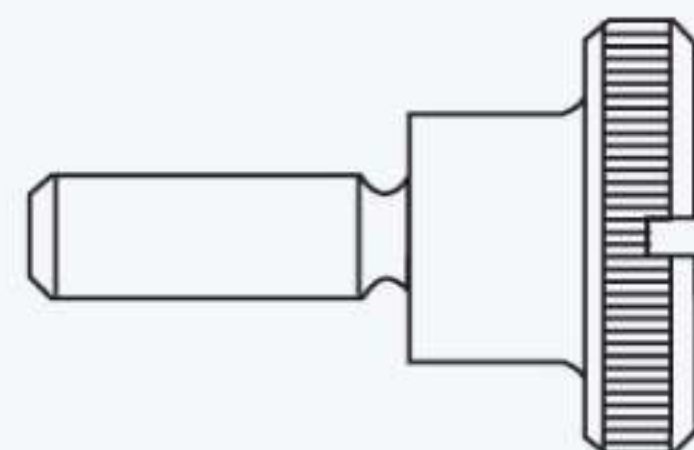
DIN : 427  
SIZE : M3 to M12

## KNURLED THUMB SCREWS



DIN : 464  
SIZE : M3 TO M10

## KNURLED THUMB SCREWS (SLOTTED)



DIN : 465  
SIZE : M3 TO M12

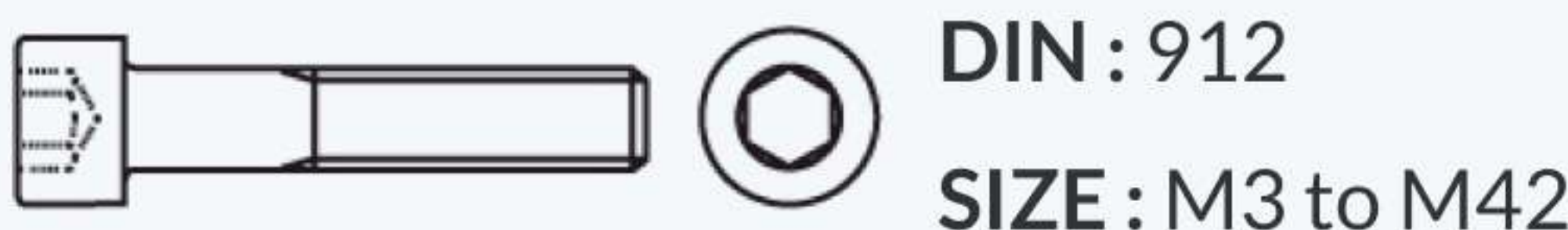


# SCREWS

## FLAT KNURLED THUMB SCREWS



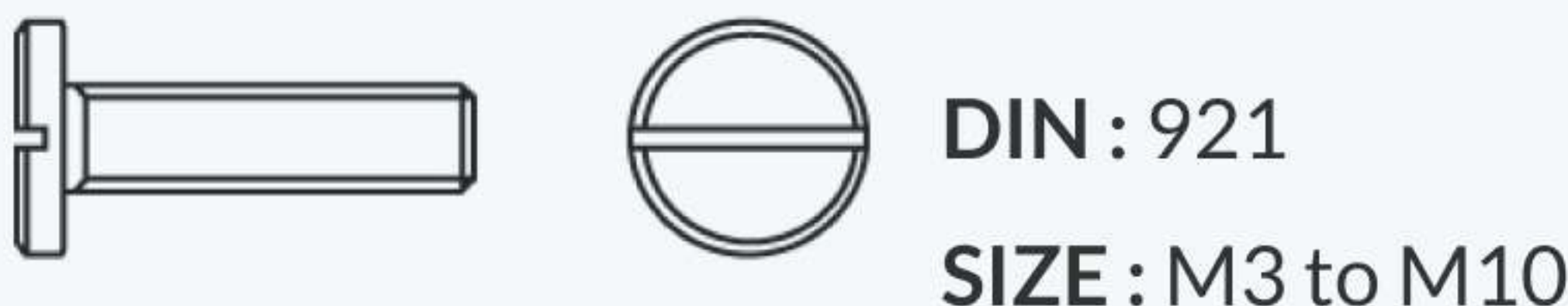
## HEXAGON SOCKET HEAD CAP SCREWS



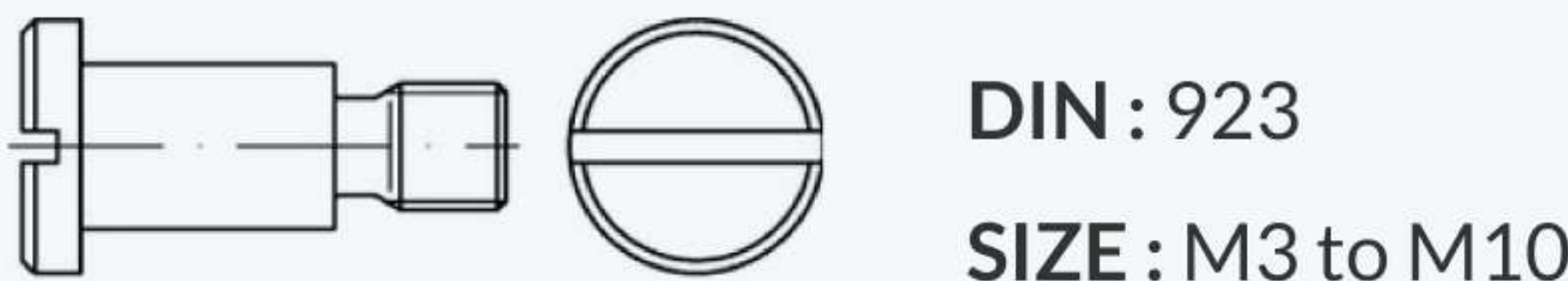
## SLOTTED PAN HEAD SCREW, SMALL HEAD



## SLOTTED PAN HEAD SCREWS LARGE HEAD



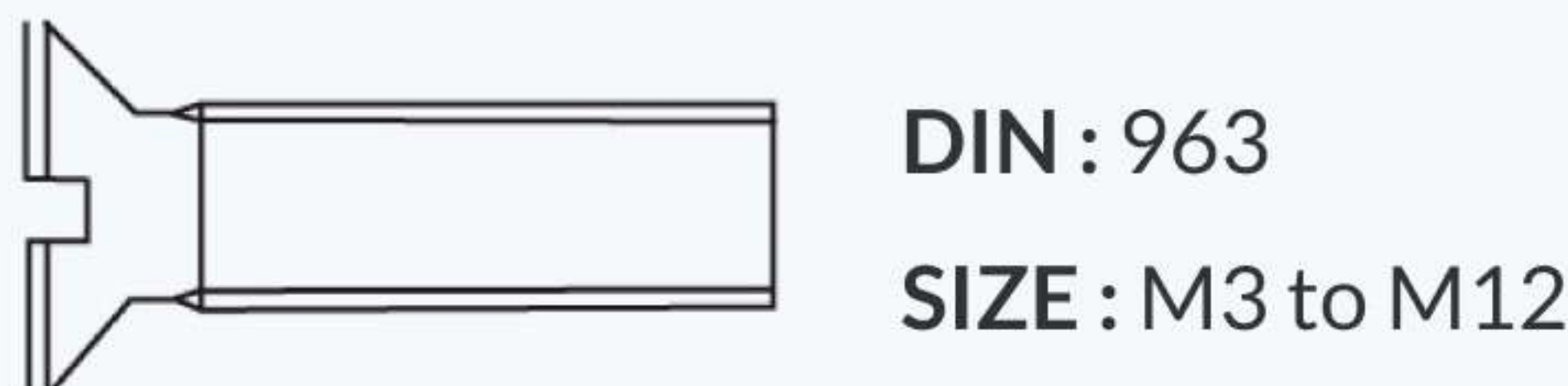
## SLOTTED PAN HEAD SCREWS WITH SHOULDER



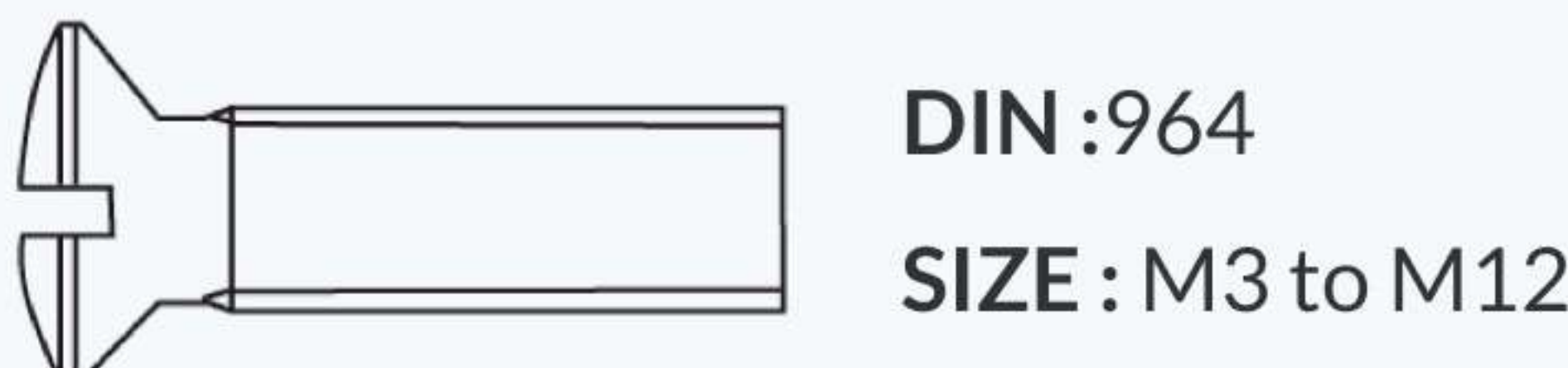
## SLOTTED SHOULDER SCREWS



## SLOTTED COUNTERSUNK HEAD SCREWS



## SLOTTED RAISED COUNTERSUNK HEAD SCREW



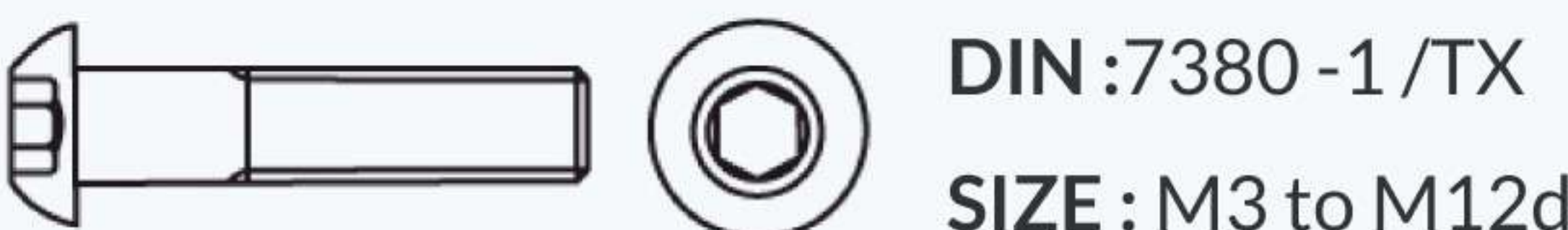
## SLOTTED CAPSTAN SCREWS



## SOCKET HEAD CAP SCREW, LOW HEAD



## BUTTON HEAD SCREW/SIX LOBE DRIVE



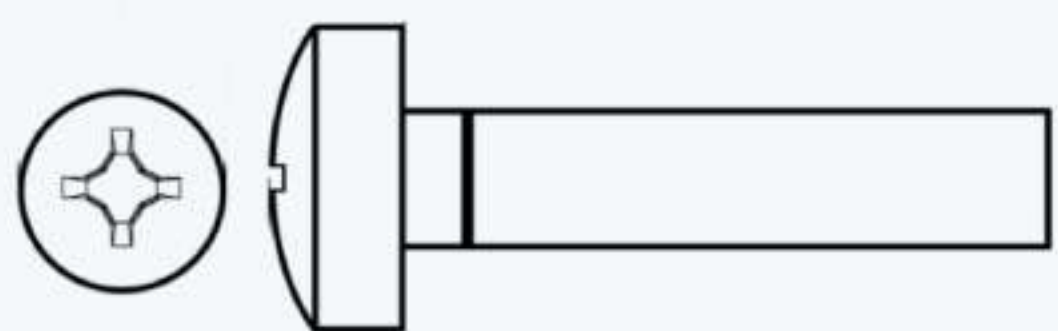
## FLANGE BUTTON HEAD SOCKET SCREWS/SIX LOBE DRIVE





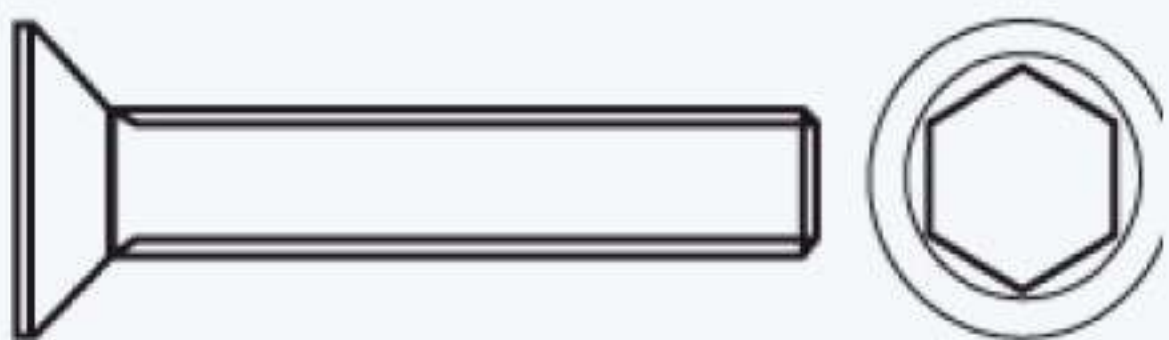
# SCREWS

## PAN HEAD SCREWS, SIX LOBE DRIVE



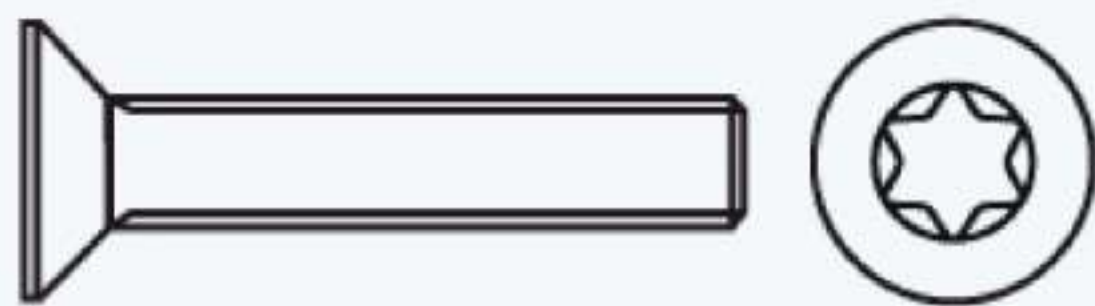
**DIN : 7985 TX**  
**SIZE : M3 to M12**

## HEXAGON SOCKED COUNTERSUNK HEAD SCREWS



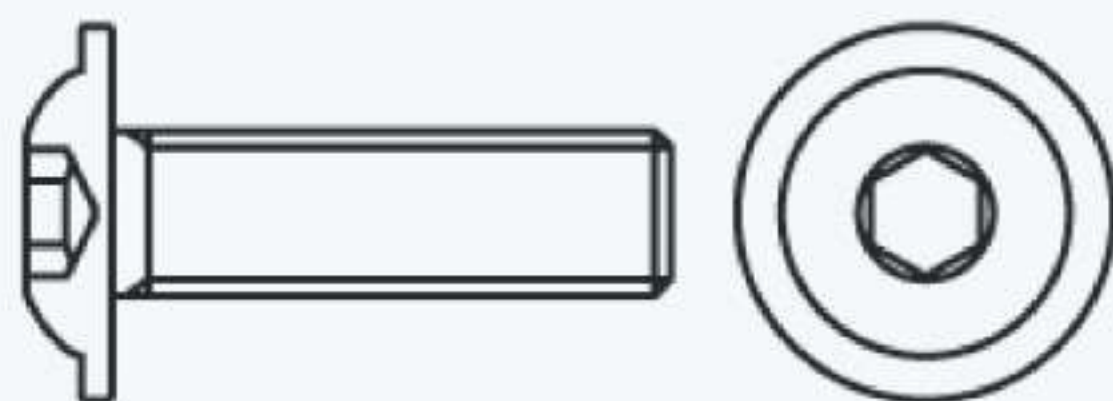
**DIN : 7991**  
**SIZE : M3 TO M12**

## COUNTERSUNK HEAD SCREWS, SIX LOBE DRIVE



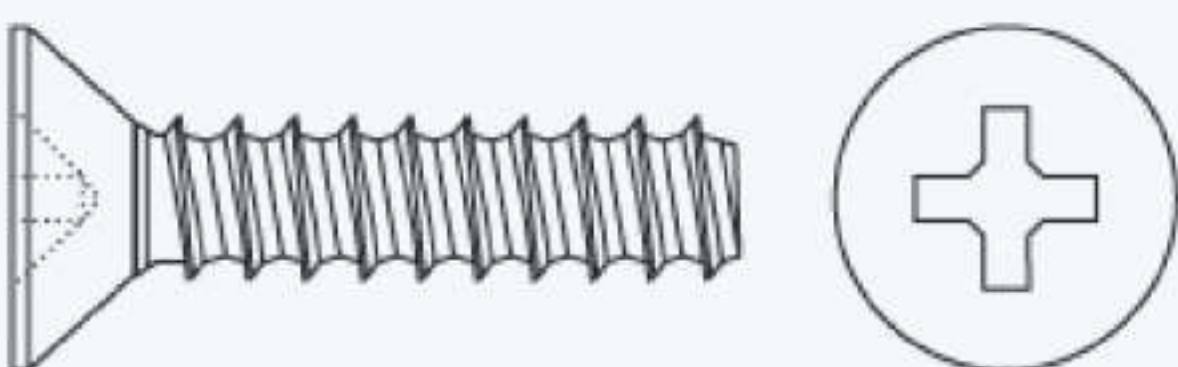
**DIN : 7991**  
**SIZE : M3 TO M12**

## SCREW WITH FLANGE HEAD & HEX SOCKET



**ATN : RF 04**  
**SIZE : M3 to M12**

## PLASTIC SCREW WITH COUNTERSUNK HEAD



**ATN : RF 19**  
**SIZE : M3 to M10**

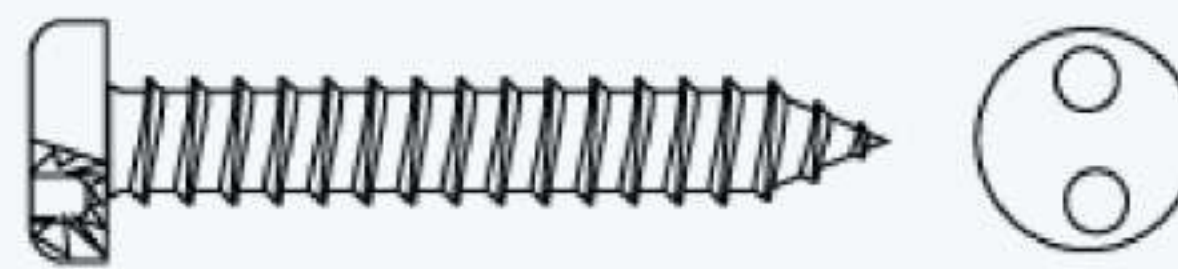
## PLASTIC SCREW WITH PAN HEAD



**ATN : RF 20**  
**SIZE : M3 to M10**

# SELF TAPPING SCREWS

## CHEESE HEAD SECURITY SELTAPPING SCREWS WITH TWO HOLE DRIVE



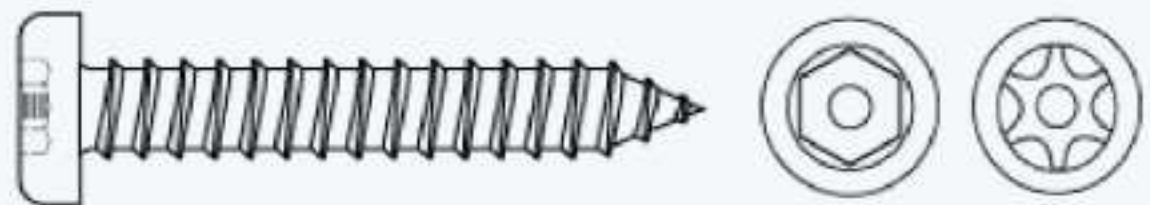
**ATN : RF 24**  
**SIZE : M3 to M 10**

## COUNTERSUNK HEAD SECURITY SELFTAPPING SCREWS WITH TWO HOLE DRIVE



**ATN : RF 26**  
**SIZE : M3 to M10**

## BUTTON HEAD SELFTAPPING SECURITY SCREWS TAPPING PIN

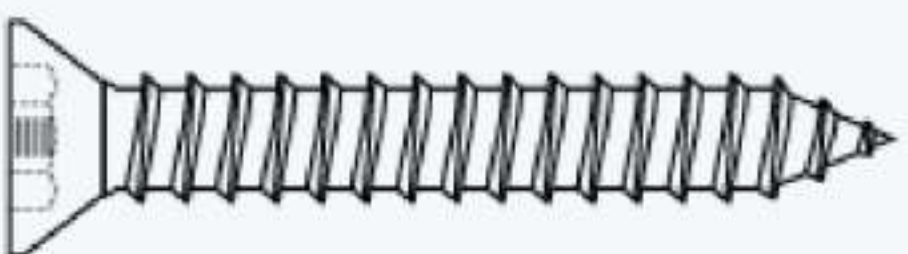


**ATN : RF 30**  
**SIZE : M3 to M10**



# SELF TAPPING SCREWS

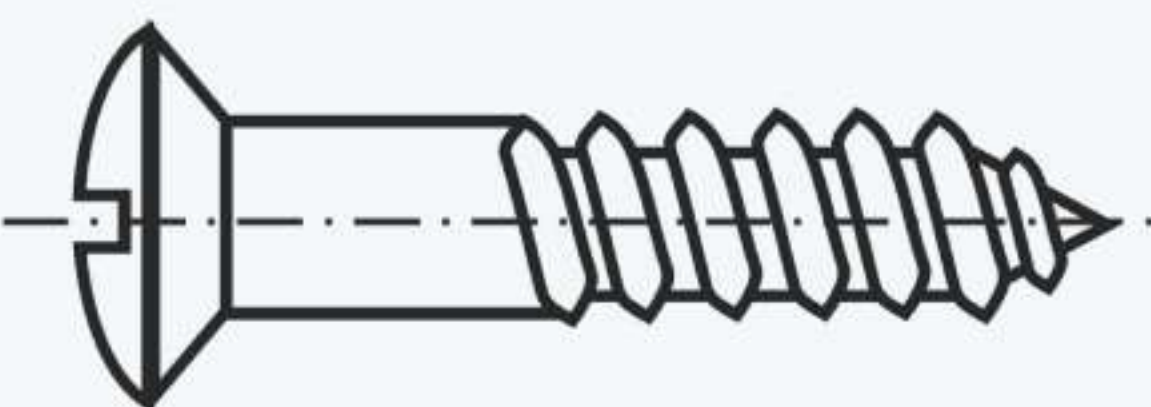
## CSK HEAD SECURITY SCREWS HEX SOCKET DRIVE + PIN



ATN : RF 32

SIZE : M3 to M10

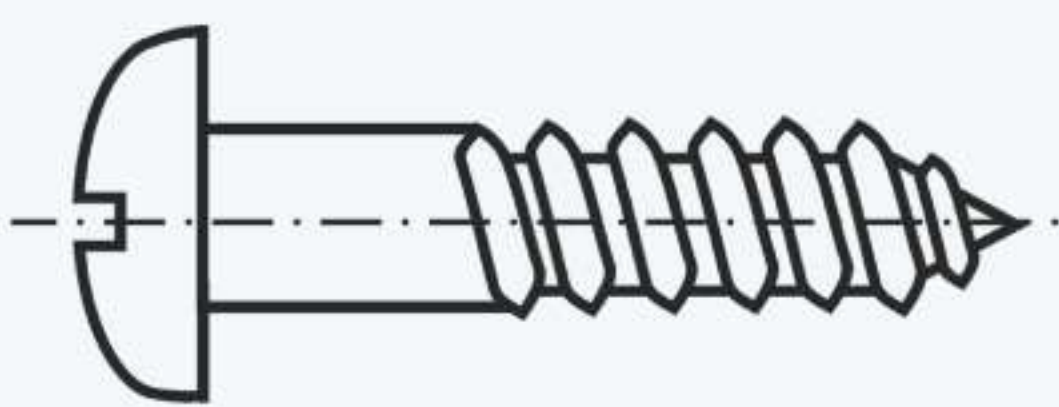
## SLOTTED RAISED COUNTERSUNK HEAD WOOD SCREWS



DIN : 95

SIZE : M3 to M8

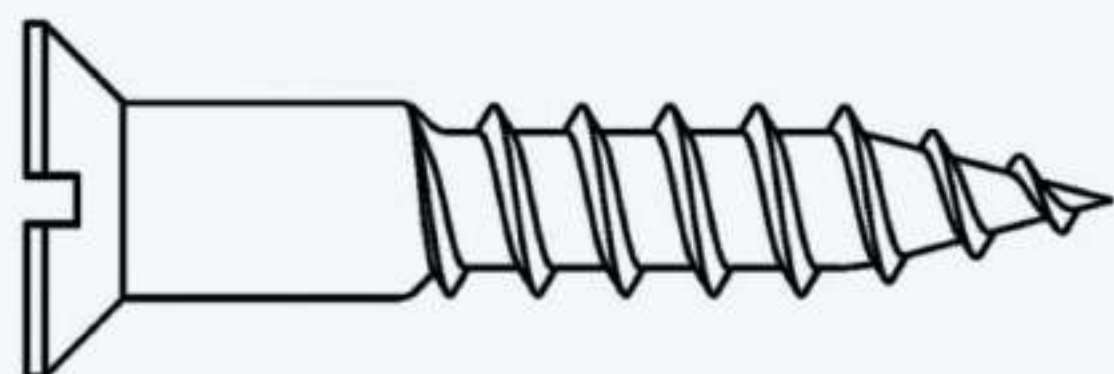
## SLOTTED ROUND HEAD WOOD SCREW



DIN : 96

SIZE : M3 to M8

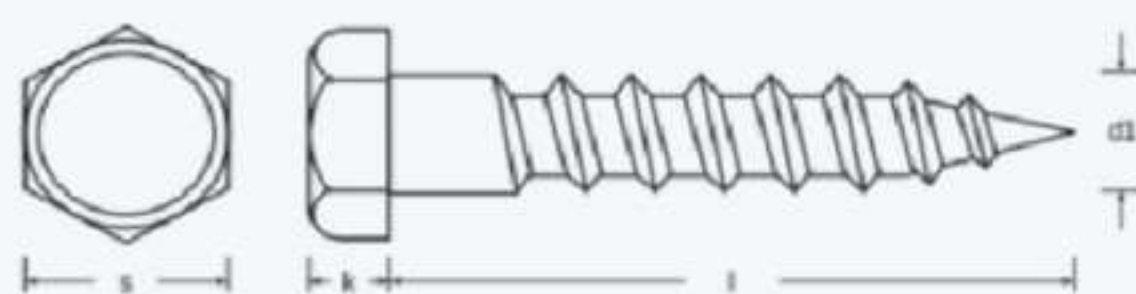
## SLOTTED COUNTERSUNK HEAD WOOD SCREW



DIN : 97

SIZE : M3 to M8

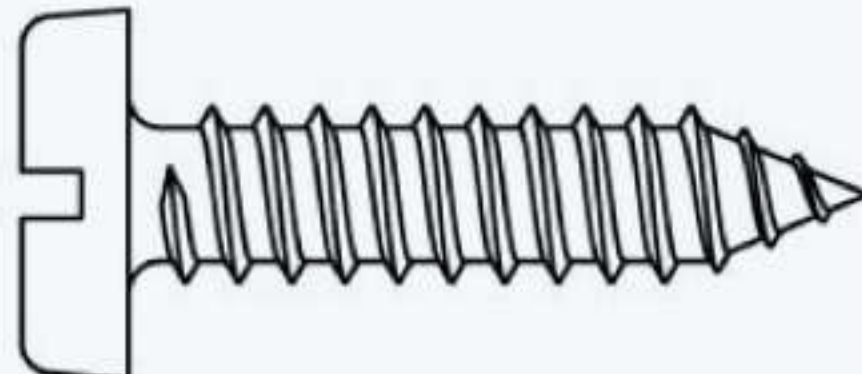
## SLOTTED SET SCREWS WITH CONE POINT



DIN : 571

SIZE : M3 to M12

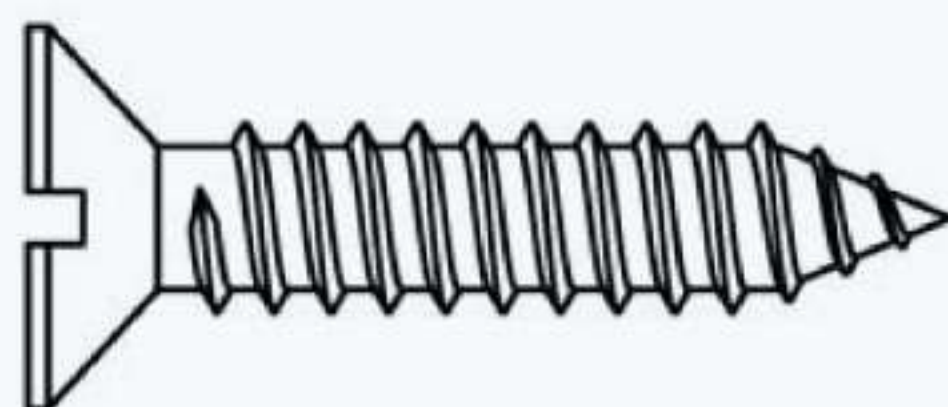
## SLOTTED PAN HEAD TAPPING SCREWS



DIN : 7971

SIZE : M3 to M8

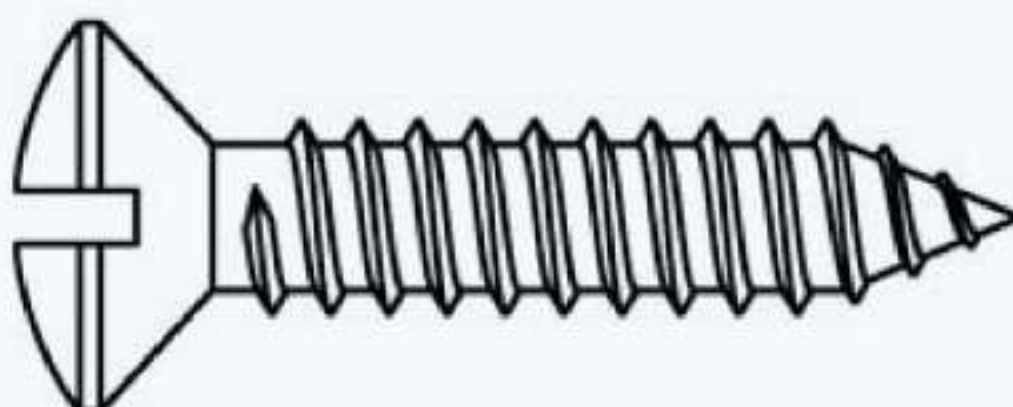
## SLOTTED COUNTERSUNK HEAD TAPPING SCREWS



DIN : 7972

SIZE : M3 to M8

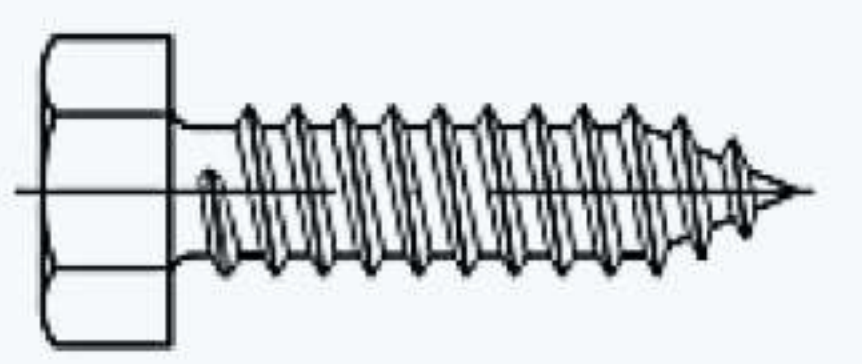
## SLOTTED RAISED COUNTERSUNK HEAD TAPPING SCREWS



DIN : 7973

SIZE : M3 to M8

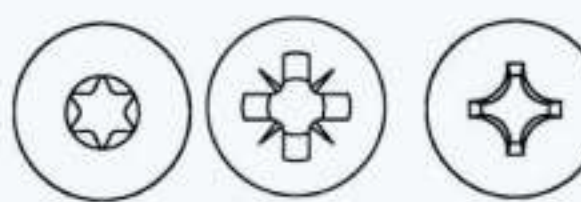
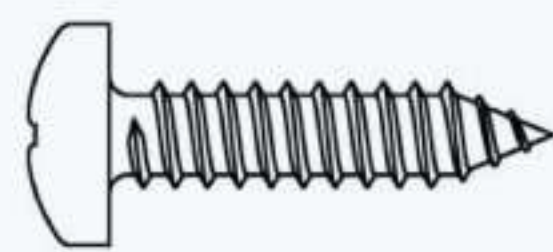
## HEXAGON HEAD TAPPING SCREWS



DIN : 7976

SIZE : M3 to M8

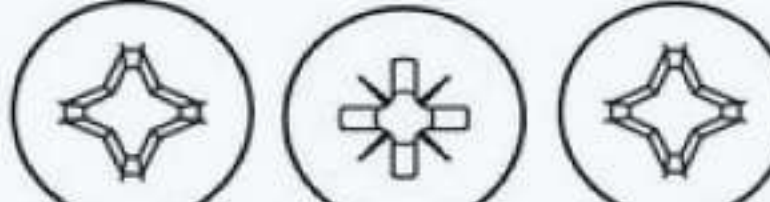
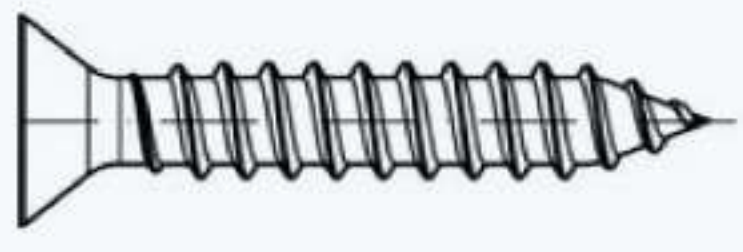
## PAN HEAD TAPPING SCREWS



DIN : 7981 C-H

SIZE : M3 to M8

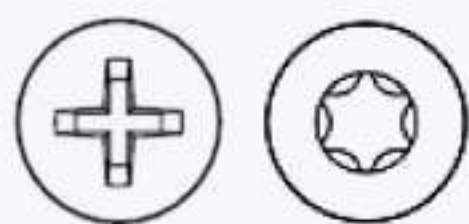
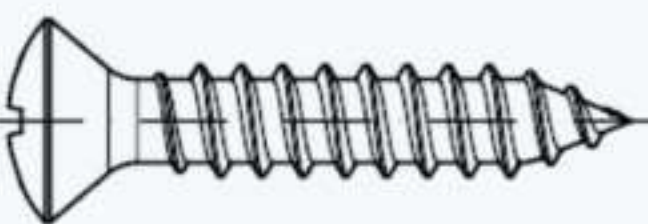
## COUNTERSUNK HEAD TAPPING SCREWS



DIN : 7982

SIZE : M3 to M8

## RAISED COUNTERSUNK HEAD TAPPING SCREWS



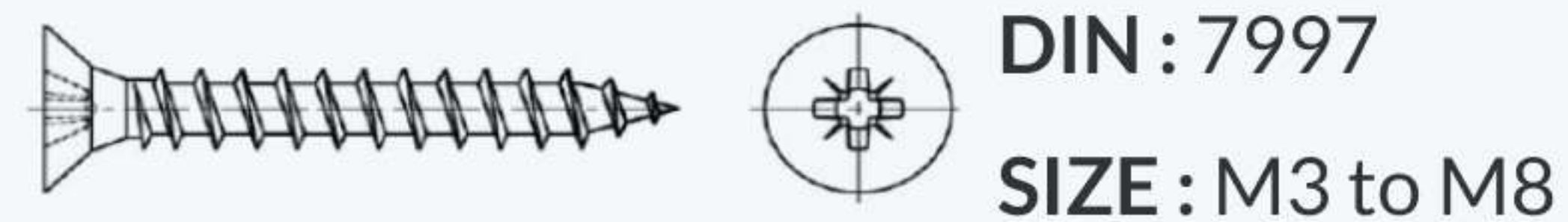
DIN : 7983

SIZE : M3 to M8



# SELF TAPPING SCREWS

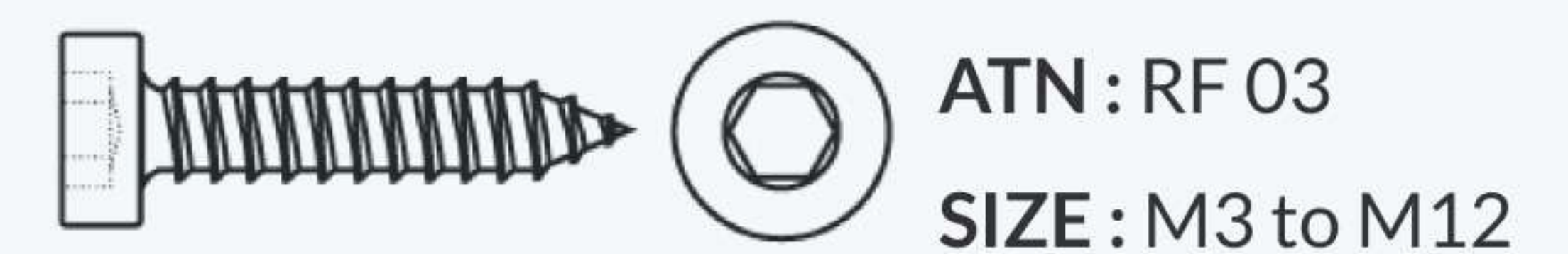
## WOOD SCREWS



## SELFTAPPING SCREWS WITH HEXAGONAL HEAD & EPDM WASHER

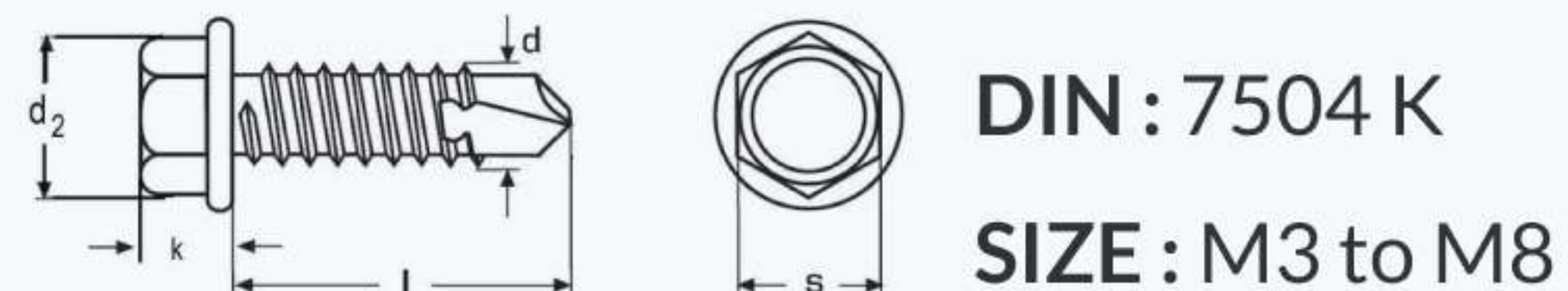


## HEX SOCKET WITH SELFTAPING THREADS

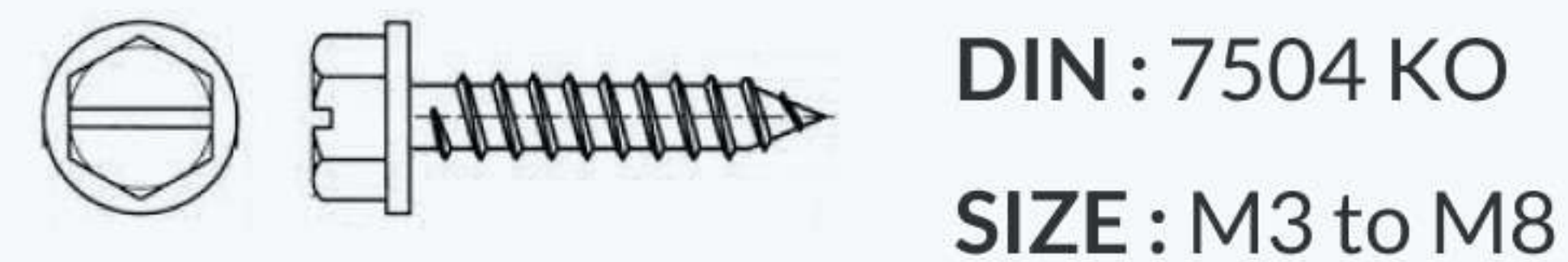


# SELF DRILLING SCREWS

## SELF DRILLING SCREWS WITH HEXAGON HEAD & FLANGE



## SELF DRILLING SCREWS WITH HEXAGON HEAD & FLANGE



## SELF DRILLING SCREWS WITH PAN HEAD / SIX LOBE DRIVE



## SELF DRILLING SCREWS WITH COUNTERSUNK HEAD / SIX LOBE DRIVE





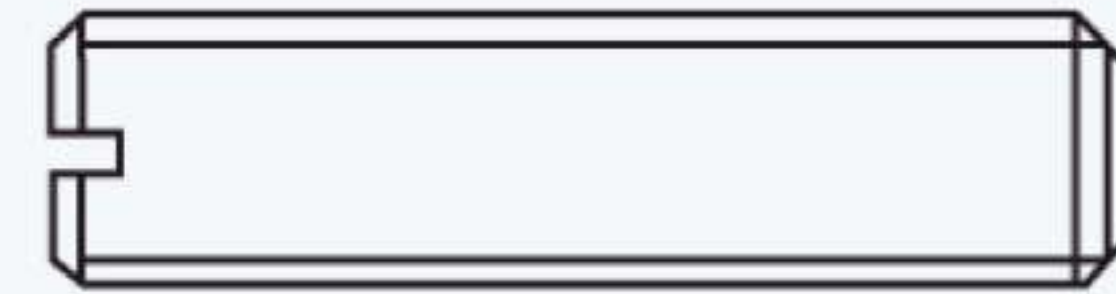
# GRUB SCREWS/SET SCREWS

## SLOTTED SET SCREWS WITH LONG DOG POINT



**DIN : 417**  
**SIZE : M6 to M30**

## SLOTTED SET SCREWS WITH CUP POINT



**DIN : 438**  
**SIZE : M6 to M30**

## SLOTTED SET SCREWS WITH FLAT POINT



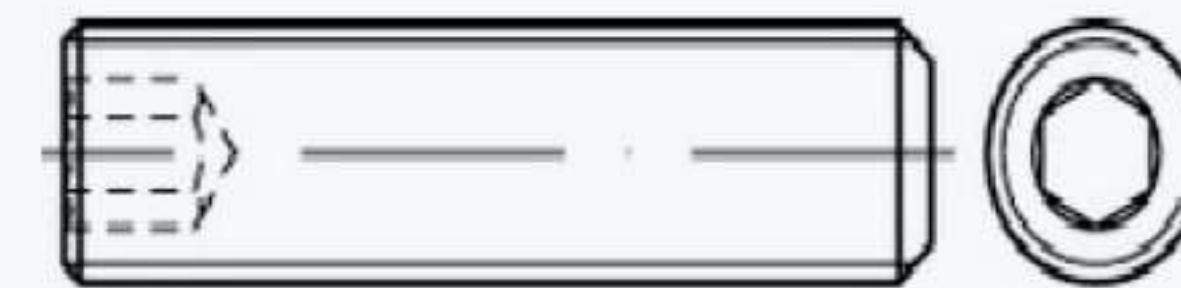
**DIN : 551**  
**SIZE : M6 to M12**

## SLOTTED SET SCREWS WITH CONE POINT



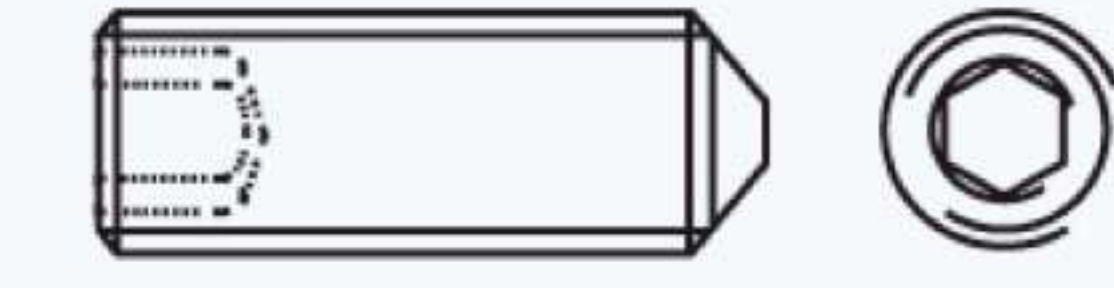
**DIN : 553**  
**SIZE : M6 to M12**

## HEAXAGON SOCKET SET SCREW WITH FLAT POINT



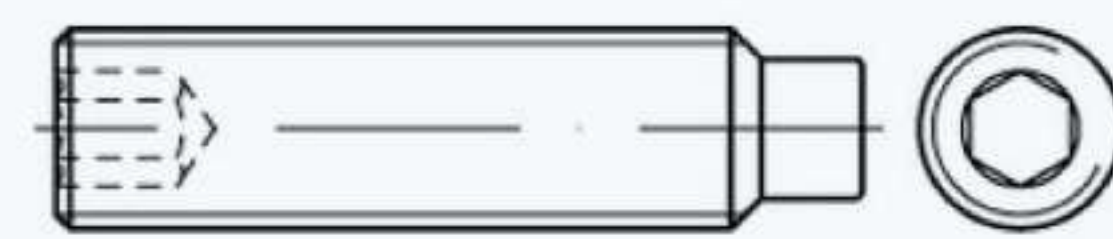
**DIN : 913**  
**SIZE : M3 to M12**

## HEXAGON SOCKET SET SCREWS WITH CONEPOINT



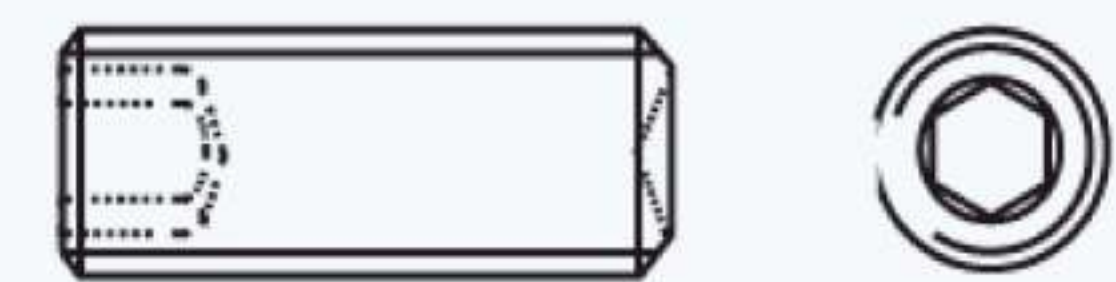
**DIN : 914**  
**SIZE : M3 to M12**

## HEXAGON SOCKET SET SCREWS WITH DOG POINT



**DIN : 915**  
**SIZE : M3 to M12**

## HEXAGON SOCKET SET SCREWS WITH CUP POINT



**DIN : 916**  
**SIZE : M3 to M12**



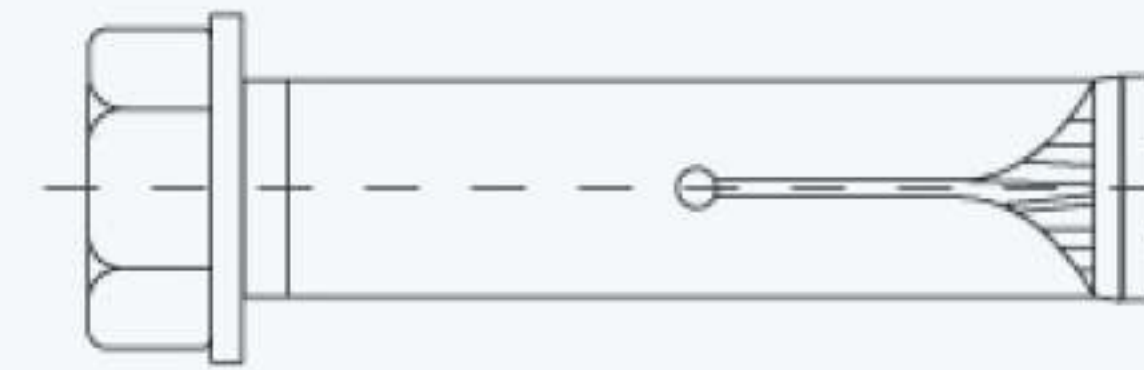
# ANCHORS

## WEDGE ANCHOR



**ATN : RF 38**  
**SIZE : M6 to M24**

## SLEEVE ANCHORS - BOLTS



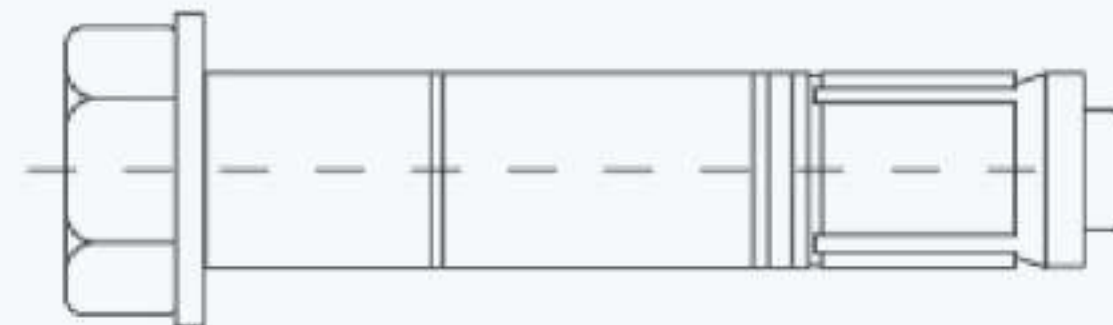
**ATN : RF 39**  
**SIZE : M6 to M20**

## SLEEVE ANCHORS - ROD



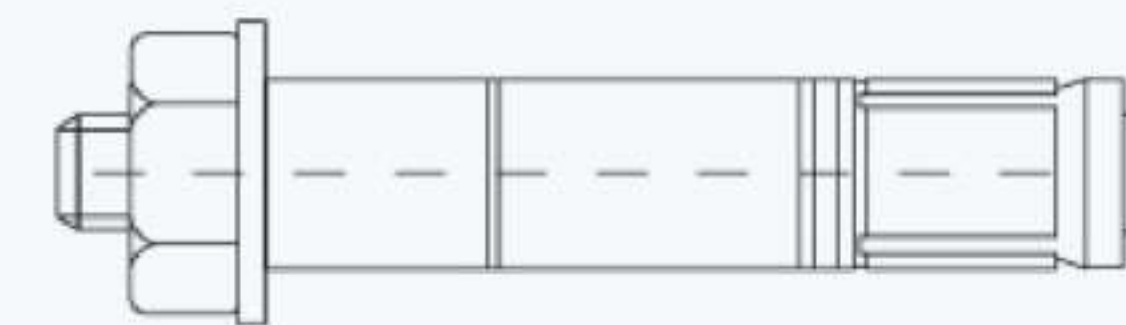
**ATN : RF 40**  
**SIZE : M6 to M10**

## HIGHLOAD ANCHORS



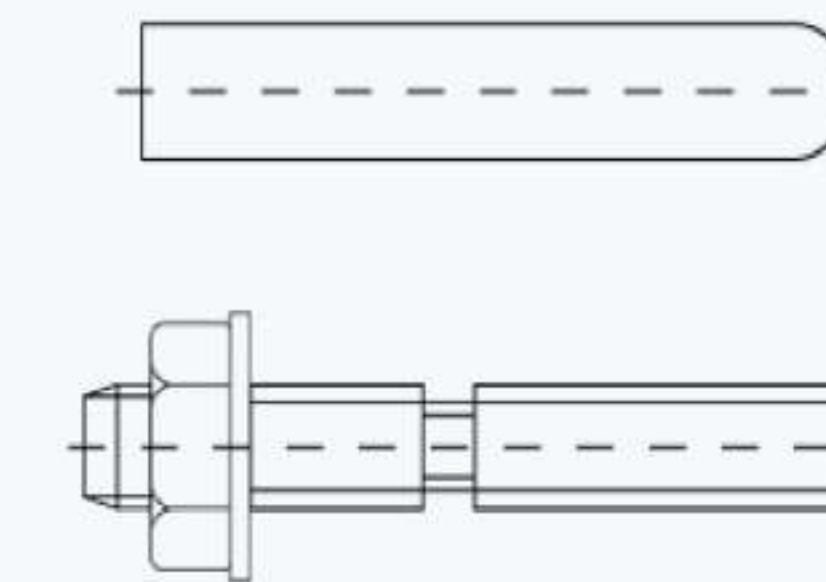
**ATN : RF 42**  
**SIZE : M8 to M24**  
**TYPE : Bolt**

## SLEEVE ANCHORS



**ATN : RF 43**  
**SIZE : M8 to M24**  
**TYPE : Stud**

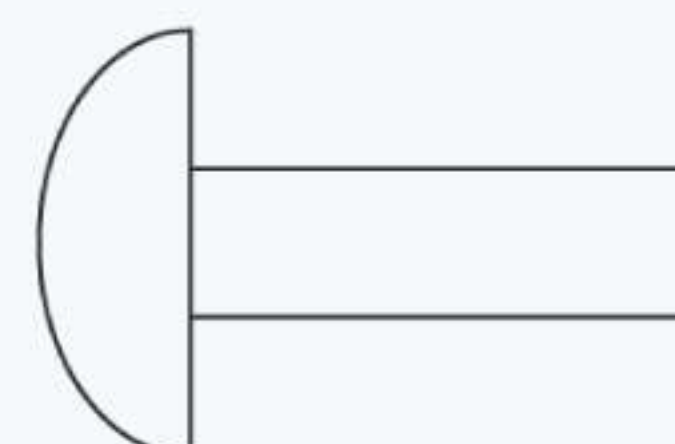
## CHEMICAL ANCHORS



**ATN : RF 44**  
**SIZE : M8 to M30**

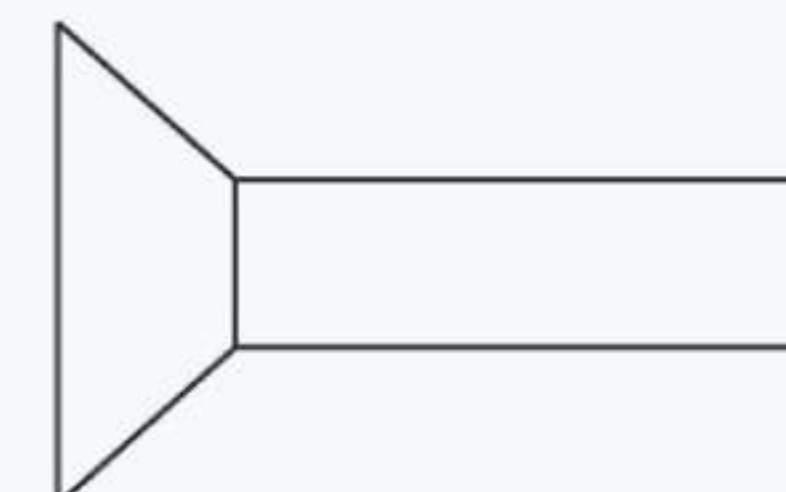
# RIVETS

## ROUND HEAD RIVETS



**DIN : 660**  
**SIZE : 2mm to 12 mm**

## COUNTERSUNK HEAD RIVETS

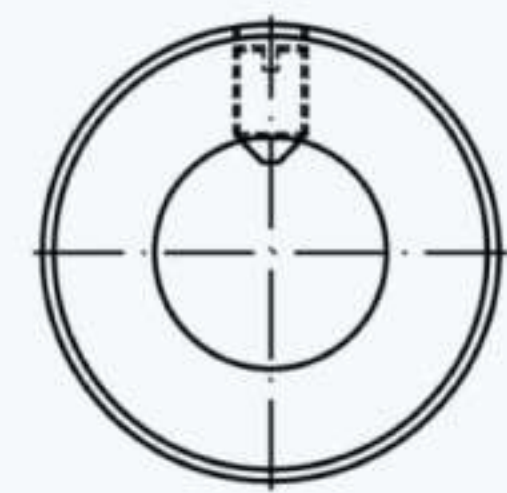


**DIN : 661**  
**SIZE : 2mm to 12 mm**



# ADJUSTING RINGS

## ADJUSTING RINGS

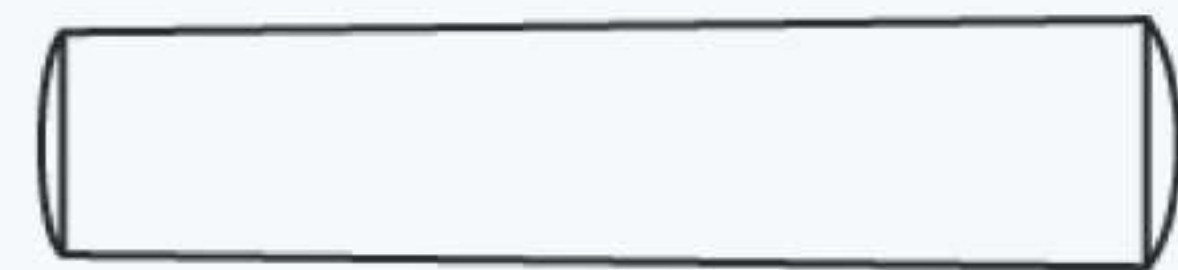


**DIN : 705**

**SIZE : 5mm to 50 mm**

# PINS

## TAPER PINS



**DIN : 1**

**SIZE : 2mm to 30 mm**

## PARALLEL PINS

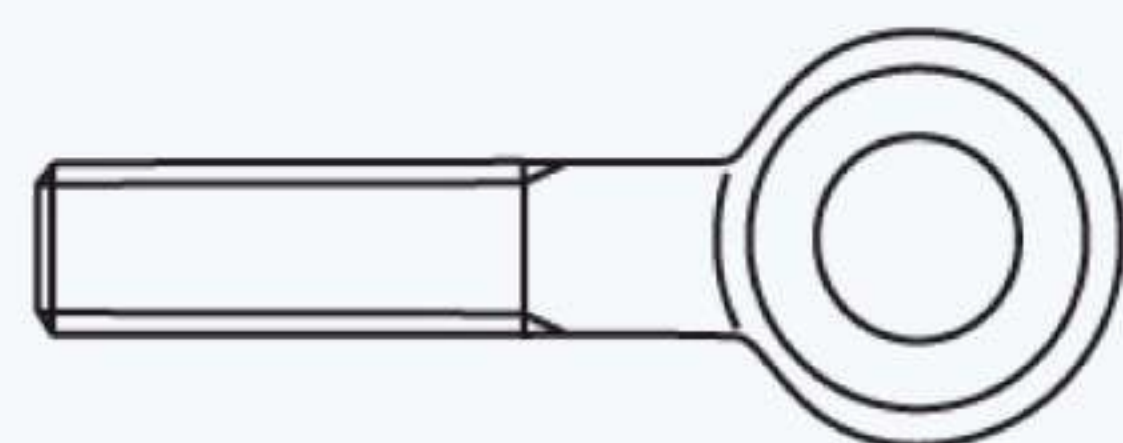


**DIN : 7**

**SIZE : 2mm to 30 mm**

# EYE BOLTS

## EYE BOLTS



**DIN : 444**

**SIZE : M6 to M36**

## EYE BOLTS



**DIN : 580**

**SIZE : M8 to M36**



## AVAILABLE STANDARD :

ANSI / ISO / DIN / ASTM AS Per Customer Specifcation

## PLATING SELECTION

Types	Salt Spray Test (hrs)
Zinc	24 - 36
YellowZinc	24 - 36
Black Phosphate	24 - 36
Grey Phosphate	24 - 36
Dacromet	500-1000
Ruspert	500-3000

Types	Salt Spray Test (hrs)
Mechanical Galvanizng	500-1000
Mechanical Galvanizng + Coating	1000-1500
Nanoplatinng	1500-2000
Tufcode (Ruspert)	1500-2000



## AVAILABLE FINISH

Self Colour (Plain) / Zinc(White/Blue/Yellow/Olive Green/Black) Also available Trivalent Chrome (Cr+3) / ROHS Compliant Black Oxide/ Nickle / Chrome / Brass / Antique Brass / Antique Bronze/ Copper / Tin / Cadmium / Lead/ Iron Zinc

Hot Dip Galvanized/Mechanical Galvanized/ Phosphate / Dacrodized / Delta Coating / E-Coating / Geomat / Zinc FlakeAnd Coating Adhesives / Sealants on Threading Surfaces available / PTFE

## AVAILABLE PACKING

Carton Packing (about 20-25kg).



## AVAILABLE MATERIAL

- Low Carbon Steel
- High Carbon Steel
- Stainless Steel

While sending your enquiry, kindly provide us with the following details to enable us to be more efficient in our service to you.

- Description
- Standard
- Material
- Size (Nominal Dia, Length, Head Style, Point Style....etc)
- Surface Treatment and Heat Treatment
- Quantity
- Delivery Requirement (Freight / Transportation)
- Packing Requirement if any
- Special Requirement if any
- Drawing ( If non standard Screw) / Sample



A light gray world map is centered in the background of the slide, showing the outlines of continents and major landmasses.

Quality  
you won't find elsewhere  
Tailor-made to your  
Specification



# CONTACT



Unit no 8, 9 Gayatri Ind Estate,  
Opp Fire Brigade, Navghar,  
Vasai (E) Palghar-401201,  
Maharashtra, India.



[info@rixonfasteners.com](mailto:info@rixonfasteners.com)



+91 99309 99392



[www.rixonfasteners.com](http://www.rixonfasteners.com)

